



**OVER 60?**

Secure this property  
for up to **59% less!**

**Guide Price**  
**£240,000**

**Leasehold**

1x  1x  1x 

**Basement Flat,  
Lansdowne Street,  
Hove, East Sussex, BN3**

**cubitt&west**  
Helping you move forwards





## Main features

- Central Hove/BN3 location, moments from the seafront and beach
- Lots of cafes, restaurants and bars close by
- Walking distance to the train station
- Own street entrance
- Rear patio garden

## Accommodation

### LOWER GROUND FLOOR

#### Entrance Hall

Lounge : 13'3 into bay x 12'11  
(4.04m x 3.94m)

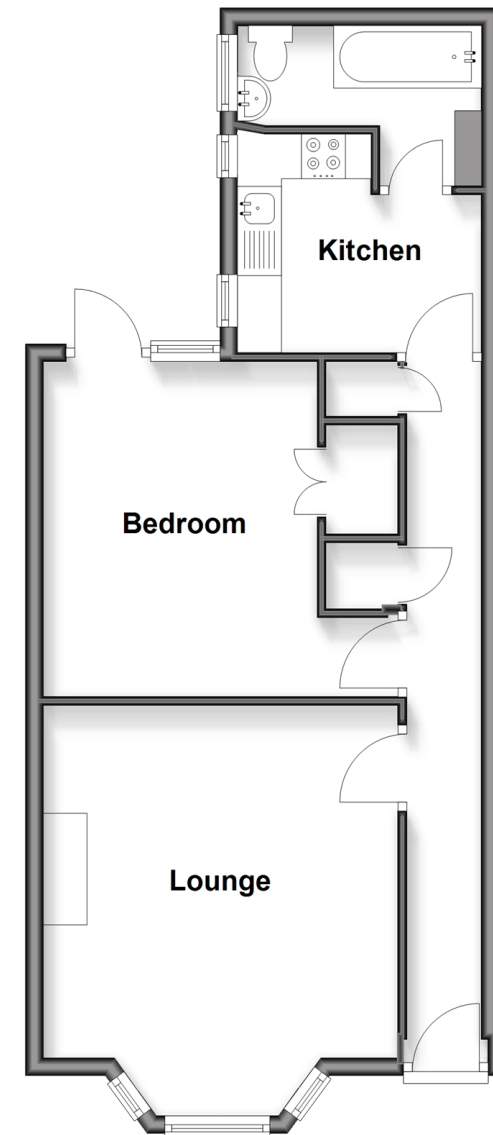
Bedroom : 12'4 x 10'3 (3.76m x 3.13m)

Kitchen : 9'1 x 6'7 (2.77m x 2.01m)

Bathroom

### Lower Ground Floor

Approx. 50.5 sq. metres (543.5 sq. feet)



**Call Central Brighton - 01273 820600 ■ [cubittandwest.co.uk](http://cubittandwest.co.uk)**

- Legal advice should be taken to verify fixtures/fittings, planning, alterations and/or lease details
- Appliances & services are untested, dimensions are approximate and floor plans are not to scale
- Through a Homewise Home For Life Plan people aged 60+ can secure this property for up to 50% less, by purchasing a Lifetime Lease.



32412886/20251107/EM/EM