



**Guide Price**  
**£450,000**

**Share of  
Freehold**

2x  1x  1x 

**Medina Villas, Hove,  
East Sussex, BN3**

**OVER 60?**

Secure this property  
for up to **59% less!**

**cubitt&west**  
Helping you move forwards





## Main features

- Generous sized period property, close to the stunning Hove seafront
- Close to a wealth of shops and restaurants
- Bright and light throughout with a dual aspect lounge
- Spacious enough for homeworkers
- Transport links to London within easy reach

## Accommodation

### GROUND FLOOR

#### Entrance Hall

Lounge : 20'0 into bay x 14'4  
(6.10m x 4.37m)

Kitchen : 13'9 x 6'5 (4.19m x 1.96m)

Bedroom 1: 19'5 x 13'0 (5.92m x 3.97m)

Bedroom 2: 19'5 x 8'0 (5.92m x 2.44m)

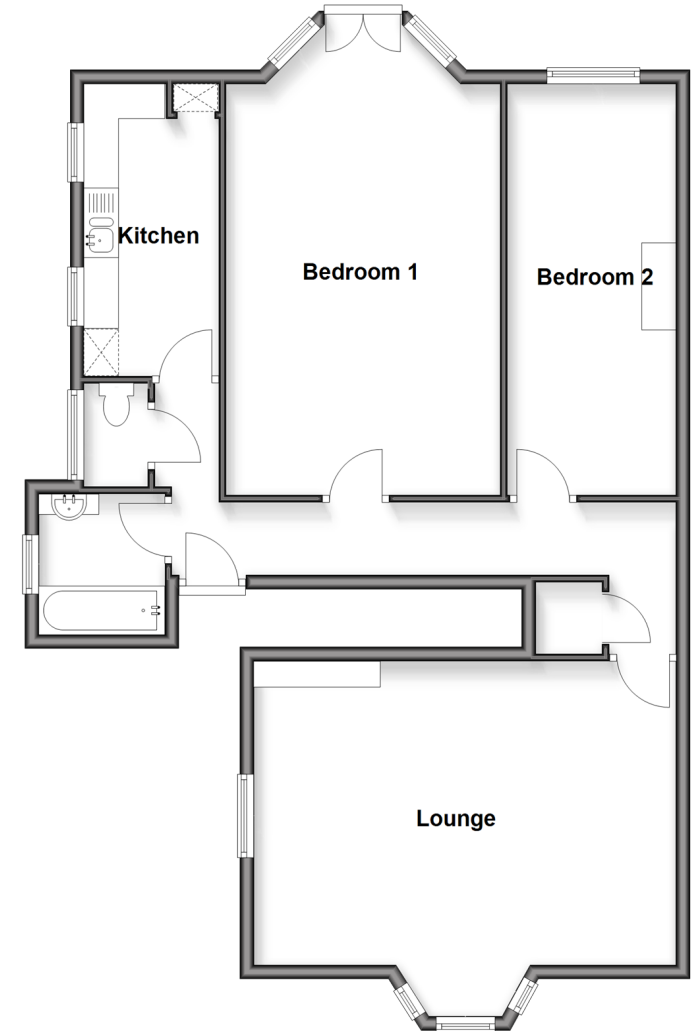
#### Bathroom

#### Separate Toilet

### OUTSIDE

#### Off Road Parking

**Ground Floor**  
Approx. 94.6 sq. metres (1018.7 sq. feet)



**Call Central Brighton - 01273 820600 ■ [cubittandwest.co.uk](http://cubittandwest.co.uk)**

- Legal advice should be taken to verify fixtures/fittings, planning, alterations and/or lease details
- Appliances & services are untested, dimensions are approximate and floor plans are not to scale
- Through a Homewise Home For Life Plan people aged 60+ can secure this property for up to 59% less, by purchasing a Lifetime Lease.



32412853/20250703/AB/AB