



Guide Price
£250,000

Leasehold

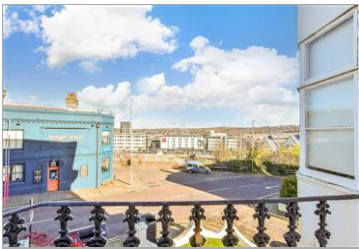
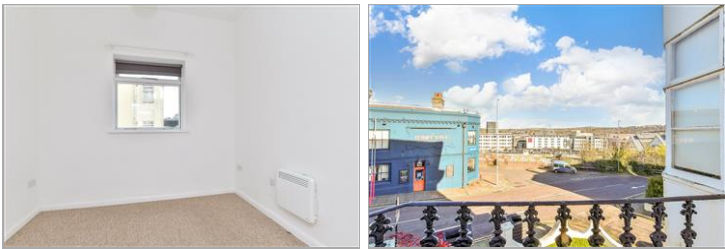
2x  1x  1x 

**Buckingham Place,
Brighton, East Sussex,
BN1**

OVER 60?

Secure this property
for up to **59% less!**

cubitt&west
Helping you move forwards



Main features

- Quiet, yet very central Brighton location
- Far reaching views
- Short walk to Brighton station, ideal for commuters
- Popular pubs, cafes and more on your doorstep
- No onward chain

Accommodation

SPLIT LEVEL FIRST FLOOR

Entrance Hall

Lounge/Kitchen : 15'4 into bay x 13'2 (4.68m x 4.02m)

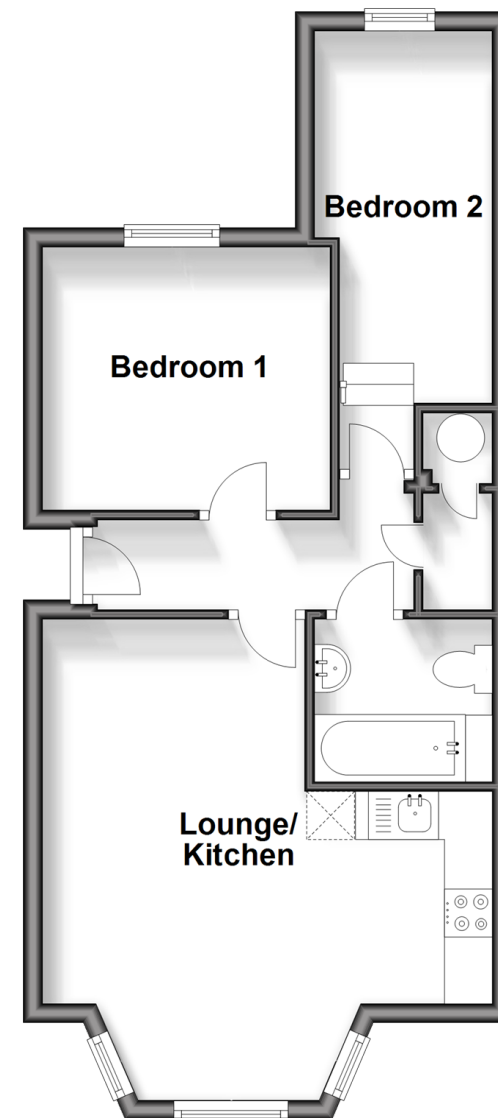
Bedroom 1 : 15'5 x 5'10 (4.70m x 1.78m)

Bedroom 2 : 9'10 x 9'2 (3.00m x 2.80m)

Bathroom

Split Level First Floor

Approx. 43.0 sq. metres (462.5 sq. feet)



Call Central Brighton - 01273 820600 ■ cubittandwest.co.uk

- Legal advice should be taken to verify fixtures/fittings, planning, alterations and/or lease details
- Appliances & services are untested, dimensions are approximate and floor plans are not to scale
- Through a Homewise Home For Life Plan people aged 60+ can secure this property for up to 59% less, by purchasing a Lifetime Lease.



32412816/20241230/AF/EM