



Price
£290,000

Leasehold

1x  1x  1x 

**The Chrome Works,
Goldstone Lane, Hove,
East Sussex, BN3**

cubitt&west
Helping you move forwards



Main features

- Apartment in modern block which has lift access
- Modern and move in condition
- Sunny balcony and communal garden
- Moments from Hove train station
- Walking distance to Hove shops, coffee shops, bars, and restaurants

Accommodation

THIRD FLOOR

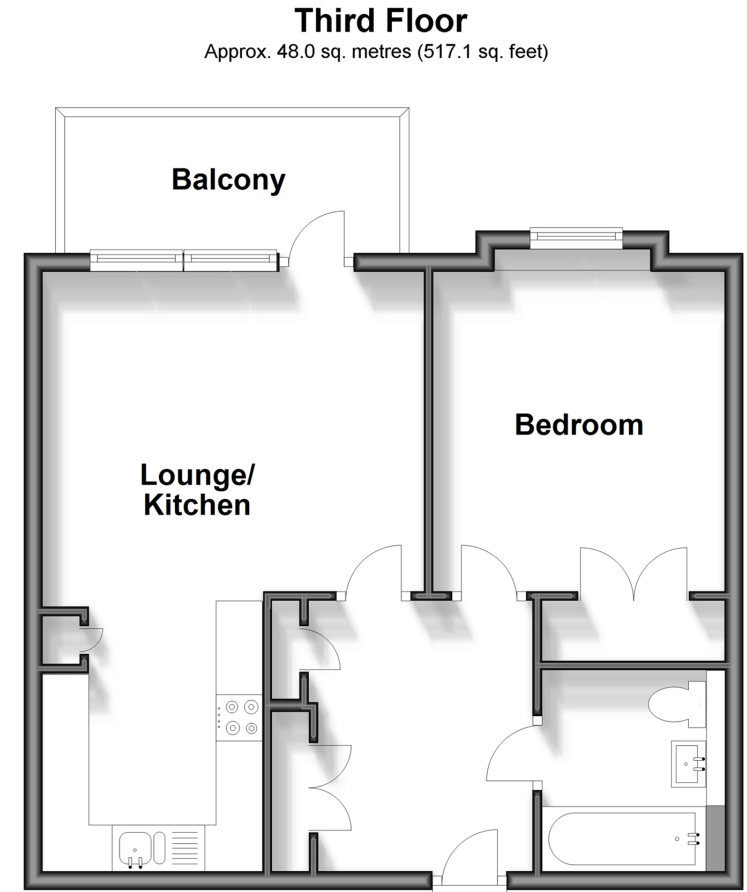
Entrance Hall

Lounge/Kitchen : 21'8 x 13'4 (6.61m x 4.07m)

Balcony

Bedroom : 13'7 x 10'3 (4.14m x 3.13m)

Bathroom



Call Central Brighton - 01273 820600 ■ [cubittandwest.co.uk](https://www.cubittandwest.co.uk)

- Legal advice should be taken to verify fixtures/fittings, planning, alterations and/or lease details
- Appliances & services are untested, dimensions are approximate and floor plans are not to scale