



Guide Price
£280,000
Share of Freehold

1x  1x  1x 

Brunswick Place, Hove, East Sussex, BN3

cubitt&west
Helping you move forwards



Main features

- Popular central Hove/Brunswick location, with lots on your doorstep
- A short stroll to the Lawns and beach
- Private patio
- Own street entrance
- Modern, move in condition, ideal firth time purchase

Accommodation

LOWER GROUND FLOOR

Lounge : 13'1 x 12'2 (3.99m x 3.71m)

Kitchen : 13'1 x 7'7 (3.99m x 2.31m)

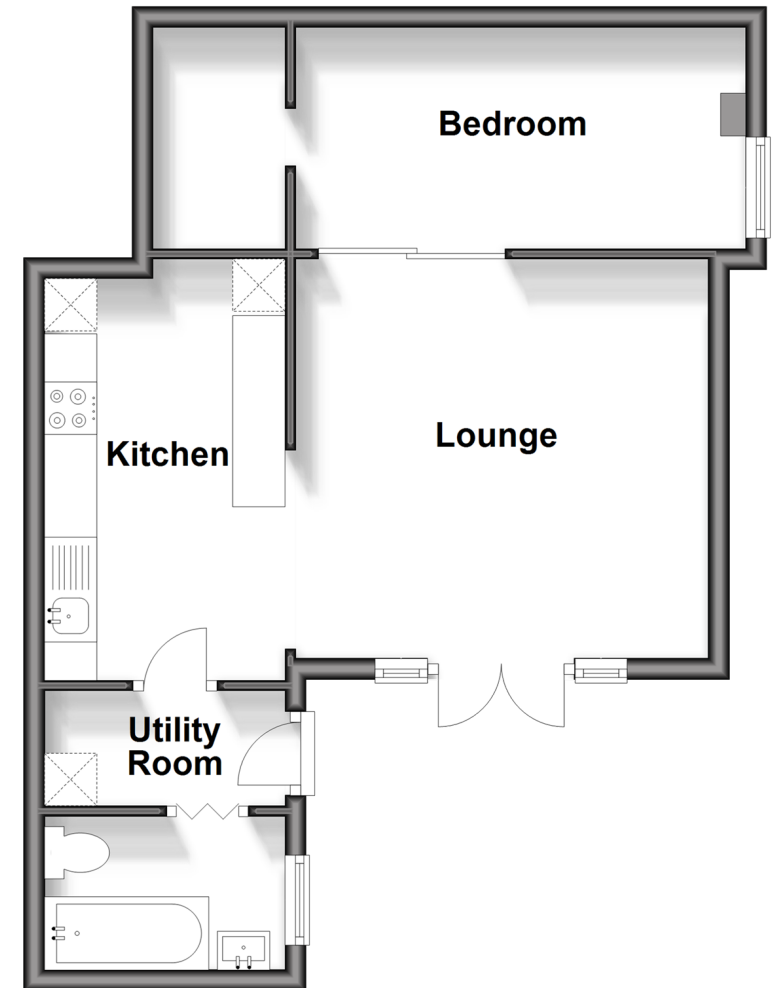
Utility Room : 7'7 x 3'3 (2.31m x 0.99m)

Bathroom

Bedroom : 14'1 x 6'7 (4.30m x 2.01m)

Lower Ground Floor

Approx. 43.3 sq. metres (465.7 sq. feet)



Call Central Brighton - 01273 820600 ■ cubittandwest.co.uk

- Legal advice should be taken to verify fixtures/fittings, planning, alterations and/or lease details
- Appliances & services are untested, dimensions are approximate and floor plans are not to scale