



Guide Price
£315,000

Leasehold

2x  1x  1x 

**Stirling Place, Hove,
East Sussex, BN3**

OVER 60?

Secure this property
for up to **59% less!**

cubitt&west
Helping you move forwards



Main features

- Fun central Hove location, close to the famous Hove Lawns and beach
- Quiet street, which is just a stroll from restaurants, coffee shops, bars
- Close to Hove train station, easy commute
- Ideal first-time purchase
- No onward chain

Accommodation

FIRST FLOOR

Entrance Hall

Lounge : 15'9 x 10'2 (4.80m x 3.10m)

Kitchen : 10'9 x 6'7 (3.28m x 2.01m)

Bathroom

Bedroom 2 : 15'9 x 6'5 (4.80m x 1.96m)

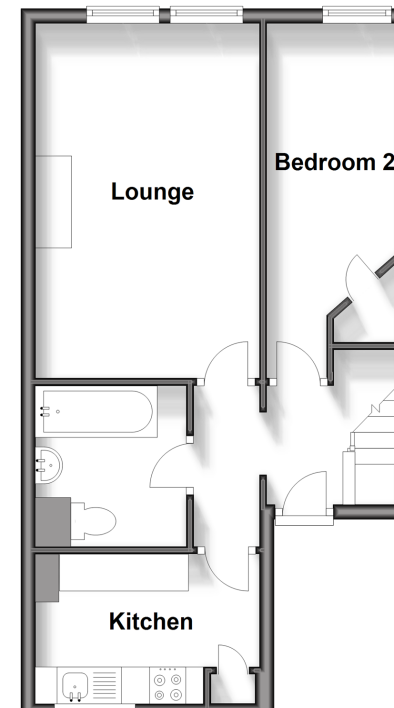
SECOND FLOOR

Landing

Bedroom 1 : 16'8 x 11'3 (5.08m x 3.43m)

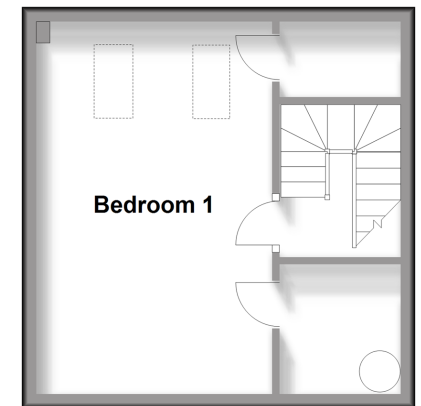
First Floor

Approx. 41.1 sq. metres (442.2 sq. feet)



Second Floor

Approx. 25.3 sq. metres (272.8 sq. feet)



Call Central Brighton - 01273 820600 ■ cubittandwest.co.uk

- Legal advice should be taken to verify fixtures/fittings, planning, alterations and/or lease details
- Appliances & services are untested, dimensions are approximate and floor plans are not to scale
- Through a Homewise Home For Life Plan people aged 60+ can secure this property for up to 59% less, by purchasing a Lifetime Lease.



32412783/20250310/EM/EM