



Guide Price
£300,000

**Share of
Freehold**

1x  1x  1x 

**Albany Towers, St.
Catherine's Terrace,
Hove, East Sussex, BN3**

cubitt & west
Helping you move forwards



Main features

- Light and bright apartment in purpose-built block with passenger lift
- Modernised and ready to move into
- Wonderful seaviews to the east and west
- Parking space
- No onward chain

Accommodation

TOP FLOOR

Entrance Hall

Lounge : 20'2 into bay x 11'3 (6.15m x 3.43m)

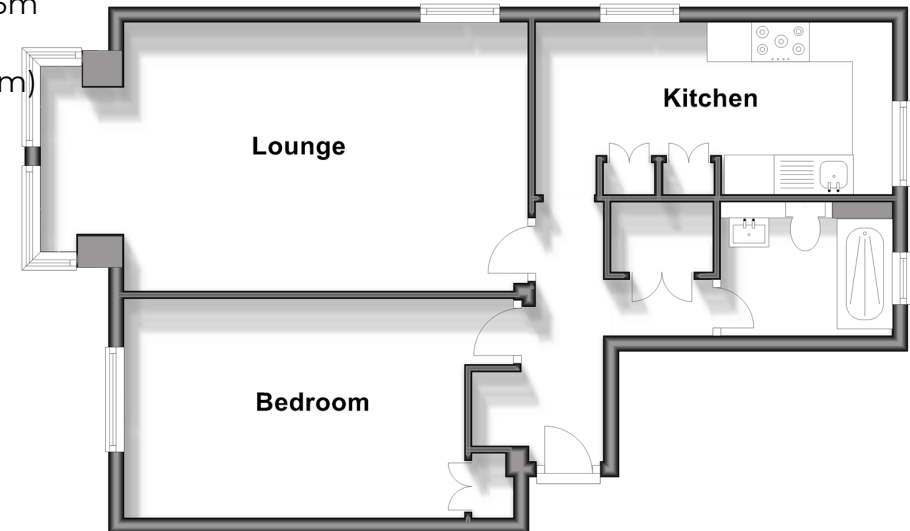
Kitchen : 14'9 x 7'2 (4.50m x 2.19m)

Bedroom: 16'1 x 9'2 (4.91m x 2.80m)

Shower Room

Top Floor

Approx. 53.9 sq. metres (580.7 sq. feet)



Call Central Brighton - 01273 820600 ■ cubittandwest.co.uk

- Legal advice should be taken to verify fixtures/fittings, planning, alterations and/or lease details
- Appliances & services are untested, dimensions are approximate and floor plans are not to scale



32412769/20240520/EM/EM