



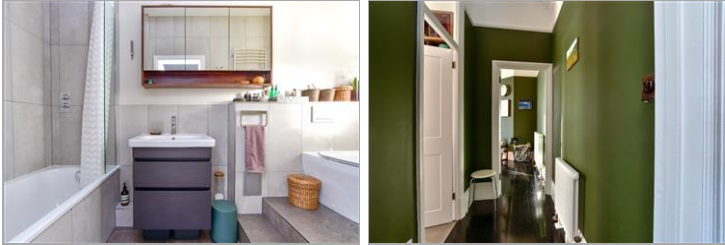
Price
£375,000

**Share of
Freehold**

1x 🏠 1x ↻ 1x 🚗

**Gwydyr Mansions,
Holland Road, Hove,
East Sussex, BN3**

cubitt & west
Helping you move forwards



Main features

- Stunning period apartment with partial sea view, with lift access
- In quiet, well looked after iconic block
- Newly fitted kitchen with Siemens built-in appliances
- Newly fitted modern bathroom
- Short walk to Hove seafront
- Chain free

Accommodation

THIRD FLOOR

Entrance Hall

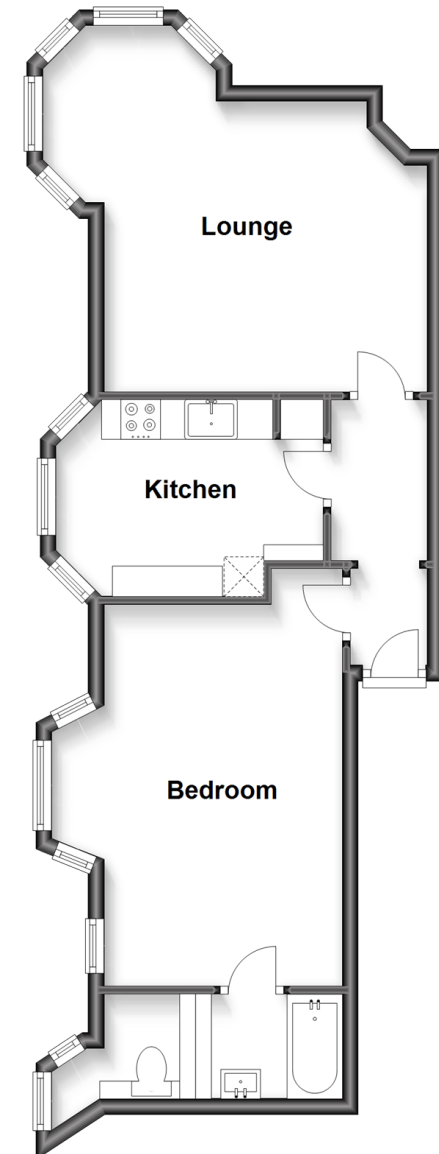
Lounge : 14'7 x 13'4 (4.45m x 4.07m)

Kitchen : 11'8 x 6'7 (3.56m x 2.01m)

Bedroom : 17'3 at widest point x 12'1 (5.26m x 3.69m)

Bathroom

Third Floor
Approx. 50.2 sq. metres (540.9 sq. feet)



Call Central Brighton - 01273 820600 ■ cubittandwest.co.uk

- Legal advice should be taken to verify fixtures/fittings, planning, alterations and/or lease details
- Appliances & services are untested, dimensions are approximate and floor plans are not to scale



32404645/20240223/JR/JR