



Guide Price

£140,000

Leasehold

1x  1x  1x 

**Ground Floor, Marine
Square, Brighton, East
Sussex, BN2**

OVER 60?

Secure this property
for up to **59% less!**

cubitt&west
Helping you move forwards



Main features

- Studio apartment in Grade II listed Regency Square
- Popular Kemptown Village location
- Brighton Seafront on your doorstep
- Own front entrance via St George's Road or via communal entrance on Marine Square
- Chain free

Accommodation

GROUND FLOOR

Entrance Hall

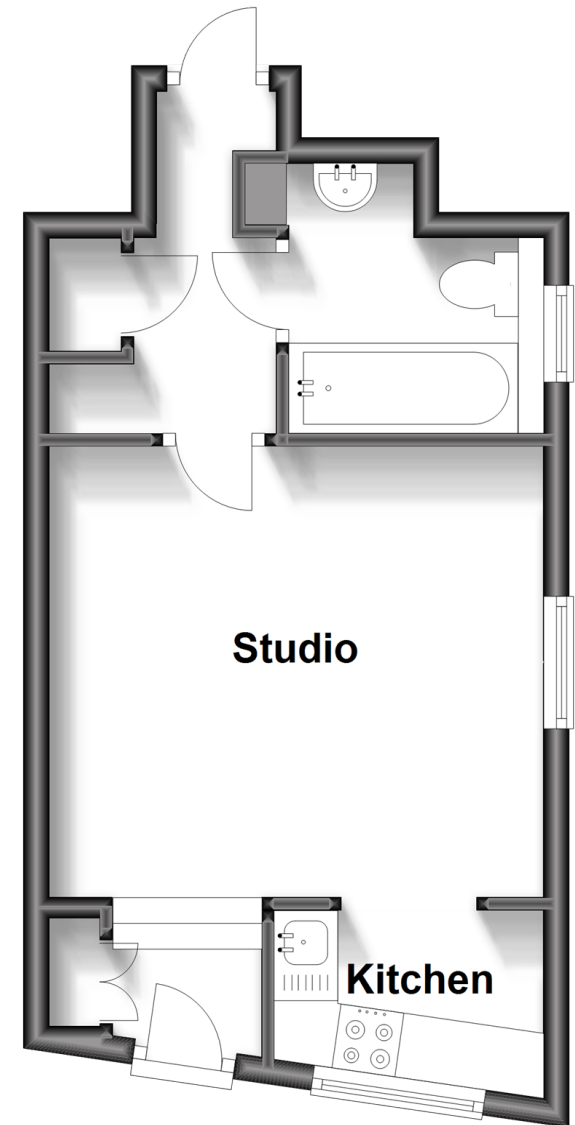
Studio : 12'7 x 11'3 (3.84m x 3.43m)

Kitchen : 7'0 x 4'6 (2.14m x 1.37m)

Bathroom

Ground Floor

Approx. 26.6 sq. metres (286.3 sq. feet)



Call Central Brighton - 01273 820600 ■ cubittandwest.co.uk

- The seller is a person connected with Cubitt & West as defined in the Estate Agents Act 1979
- Legal advice should be taken to verify fixtures/fittings, planning, alterations and/or lease details
- Appliances & services are untested, dimensions are approximate and floor plans are not to scale
- Through a Homewise Home For Life Plan people aged 60+ can secure this property for up to 50% less, by purchasing a Lifetime Lease.



32412664/20251128/EM/JR