



Price
£375,000

Freehold

3x  1x  1x 

**Arlington Gardens,
Saltdean, Brighton, East
Sussex, BN2**

OVER 60?

Secure this property
for up to **59% less!**

cubitt&west
Helping you move forwards



Main features

- Light and airy double bedrooms
- Modern kitchen with a gas hob
- Bright and modern family bathroom
- Spacious lounge diner
- Secluded, decked rear garden
- Off road parking and integral garage

Accommodation

GROUND FLOOR

Kitchen : 10'8 x 8'1 (3.25m x 2.47m)

Lounge/Dining Room: 23'9 x 10'4 (7.24m x 3.15m)

Family Bathroom

Bedroom 1: 13'2 x 10'3 (4.02m x 3.13m)

Bedroom 2: 11'8 x 11'1 (3.56m x 3.38m)

Bedroom 3: 10'0 x 9'4 (3.05m x 2.85m)

Garage: 17'7 x 8'0 (5.36m x 2.44m)

OUTSIDE

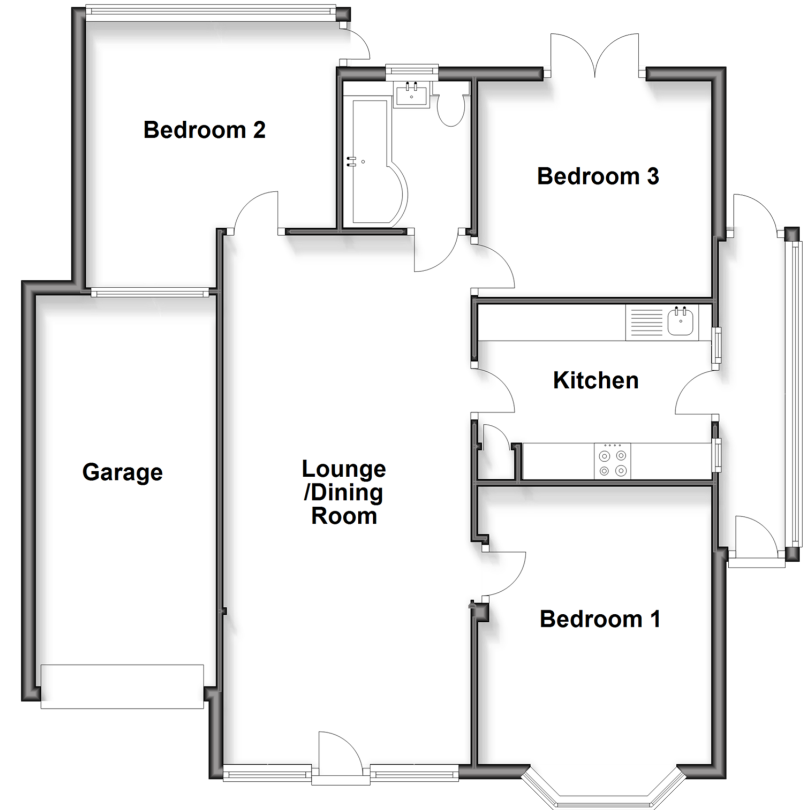
Rear Garden

Front Garden

Driveway

Ground Floor

Approx. 89.1 sq. metres (958.8 sq. feet)



Call Saltdean - 01273 304453 ■ cubittandwest.co.uk

- Legal advice should be taken to verify fixtures/fittings, planning, alterations and/or lease details
- Appliances & services are untested, dimensions are approximate and floor plans are not to scale
- Through a Homewise Home For Life Plan people aged 60+ can secure this property for up to 59% less, by purchasing a Lifetime Lease.



32009640/20250522/CA/DGK