



**Price**  
**£365,000**

**Freehold**

3x  1x  1x 

**Southview Road,  
Peacehaven, East  
Sussex, BN10**

**OVER 60?**

Secure this property  
for up to **59% less!**

**cubitt&west**  
Helping you move forwards





## Main features

- Located in quiet cul de sac
- Private drive with ample parking nearby
- Garage/sunroom
- Enclosed rear garden with patio and lawn, great space to entertain
- Timber built summer house

## Accommodation

### GROUND FLOOR

Entrance Hallway

Kitchen

Lounge : 17'4 x 11'0 (5.29m x 3.36m)

Bedroom 1: 14'2 x 10'9 (4.32m x 3.28m)

Bedroom 2: 10'4 x 9'9 (3.15m x 2.97m)

Bedroom 3: 10'9 x 7'0 (3.28m x 2.14m)

Bathroom

Separate toilet

### OUTBUILDING

Room 1

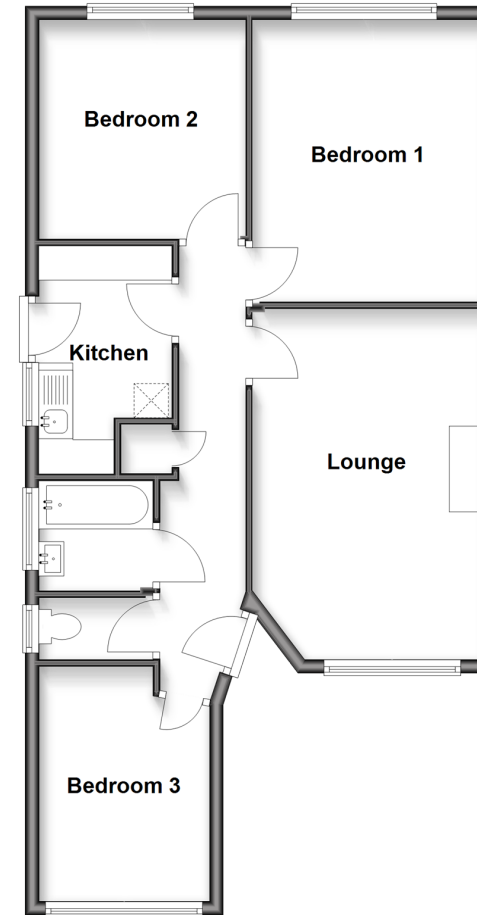
### OUTSIDE

Rear and Front Gardens

Summer House

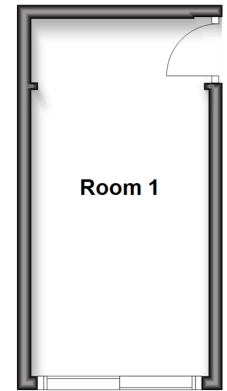
### Ground Floor

Approx. 68.9 sq. metres (741.4 sq. feet)



### Outbuilding

Approx. 13.6 sq. metres (146.0 sq. feet)



**Call Peacehaven - 01273 584511 ■ [cubittandwest.co.uk](http://cubittandwest.co.uk)**

- A private rental licensing scheme applies to some properties in this area, please contact us before proceeding
- Legal advice should be taken to verify fixtures/fittings, planning, alterations and/or lease details
- Appliances & services are untested, dimensions are approximate and floor plans are not to scale
- Through a Homewise Home For Life Plan people aged 60+ can secure this property for up to 50% less, by purchasing a Lifetime Lease.



31811136/20250811/BH/SB