



**Guide Price**  
**£350,000**

**Freehold**

3x  1x  2x 

**Firle Road, Peacehaven,  
East Sussex, BN10**

**OVER 60?**

Secure this property  
for up to **59% less!**

**cubitt&west**  
Helping you move forwards





## Main features

- Located on a substantial plot
- Spacious accommodation throughout the property
- Driveway big enough for multiple cars with a garage
- Close to public transport and local amenities
- Great home for families

## Accommodation

### GROUND FLOOR

#### Entrance Hallway

Lounge/Diner: (L-shaped) 11'2 x 9'0 (3.41m x 2.75m) plus 9'8 x 8'9 (2.95m x 2.67m)

Dining Room: 11'3 x 11'2 (3.43m x 3.41m)

Kitchen: 12'5 x 8'5 (3.79m x 2.57m)

#### Shower Room

#### Cloakroom

Bedroom 1: 17'9 x 10'7 (5.41m x 3.23m)

Bedroom 2: 14'0 x 11'2 (4.27m x 3.41m)

Bedroom 3: 8'8 x 8'5 (2.64m x 2.57m)

### OUTSIDE

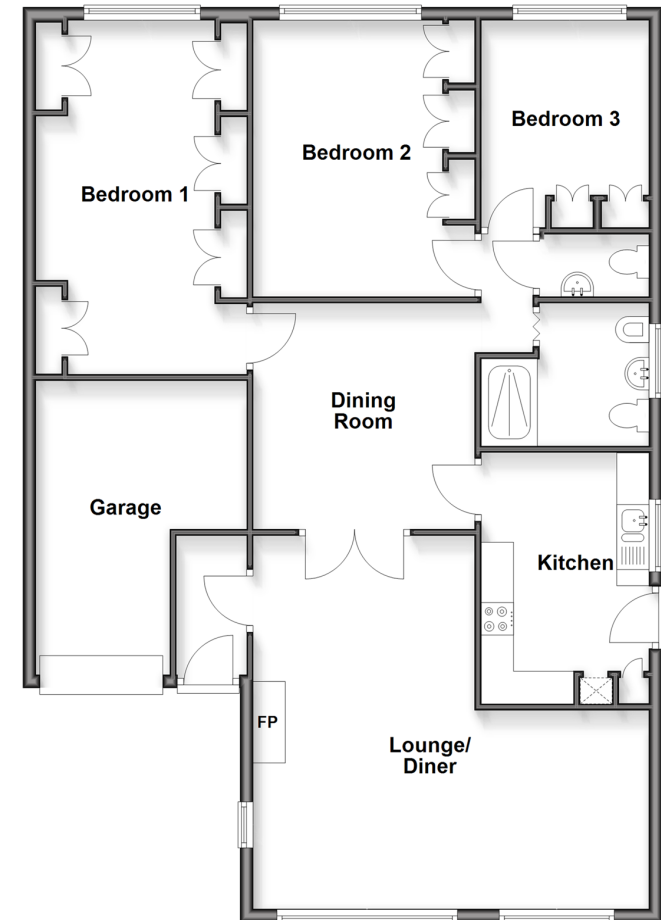
#### Driveway

#### Garage

#### Front & Rear Gardens

### Ground Floor

Approx. 117.8 sq. metres (1268.1 sq. feet)



**Call Peacehaven - 01273 584511 ■ [cubittandwest.co.uk](http://cubittandwest.co.uk)**

- A private rental licensing scheme applies to some properties in this area, please contact us before proceeding
- Legal advice should be taken to verify fixtures/fittings, planning, alterations and/or lease details
- Appliances & services are untested, dimensions are approximate and floor plans are not to scale
- Through a Homewise Home For Life Plan people aged 60+ can secure this property for up to 50% less, by purchasing a Lifetime Lease.



31811219/20251113/CA/DGK