



Price
£600,000

Freehold

3x  2x  1x 

**Lynwood Road,
Saltdean, East Sussex,
BN2**

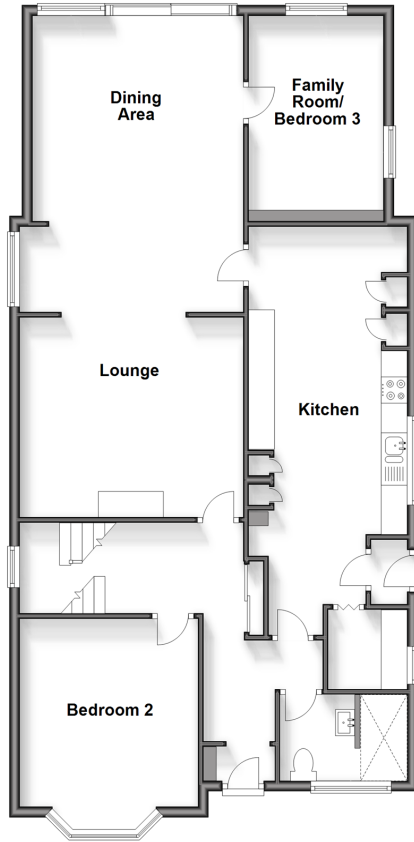
OVER 60?

Secure this property
for up to **59% less!**

cubitt & west
Helping you move forwards

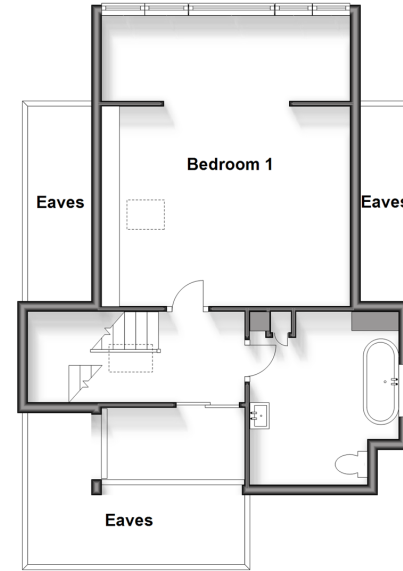
Ground Floor

Approx. 108.3 sq. metres (1165.9 sq. feet)



First Floor

Approx. 47.9 sq. metres (515.3 sq. feet)



Accommodation

GROUND FLOOR

Hallway

Shower Room

Utility Room: 5'0 x 4'7 (1.53m x 1.40m)

Bedroom 2: 13'9 x 11'3 (4.19m x 3.43m)

Kitchen: 23'5 x 9'9 (7.14m x 2.97m)

Lounge: 14'3 x 12'5 (4.35m x 3.79m)

Dining Area: 18'0 x 13'1 (5.49m x 3.99m)

Family room/Bedroom 3: 11'9 x 8'5
(3.58m x 2.57m)

FIRST FLOOR

Landing

Bedroom 1: 15'5 x 12'5 (4.70m x 3.79m)

Bathroom

OUTSIDE

Front and Rear Gardens

Driveway



Main features

- Chalet Bungalow with sea views
- Updated and improved by current owners
- Bright and airy accommodation
- Main bedroom and separate bathroom on the first floor
- Modern kitchen and bathroom
- Off road parking

Nearest Schools

Primary Schools: Saltdean Primary 0.5 miles, St Margaret's CofE Primary, Rottingdean 0.9 miles, Our Lady of Lourdes RC School 1.0 miles

Secondary Schools: Peacehaven Community School 1.7

Transport Information

Train Stations: Newhaven Town 4.7 miles, London Road 4.9 miles, Newhaven Harbour 5.0 miles

Address

Lynwood Road, Saltdean, East Sussex, BN2

Directions

For directions to this property please contact us.



cubitt&west
Helping you move forwards

Call Peacehaven Branch 01273 584511 ■ [cubittandwest.co.uk](https://www.cubittandwest.co.uk)



- A private rental licensing scheme applies to some properties in this area, please contact us before proceeding
- Appliances & services are untested, dimensions are approximate and floor plans are not to scale

- Legal advice should be taken to verify fixtures/fittings, planning, alterations and/or lease details
- Through a Homewise Home For Life Plan people aged 60+ can secure this property for up to 59% less, by purchasing a Lifetime Lease.



31811025/20250125/CY/DGK