



Price
£350,000

Freehold

3x  1x  1x 

**Gladys Avenue,
Peacehaven, East
Sussex, BN10**

OVER 60?

Secure this property
for up to **59% less!**

cubitt & west
Helping you move forwards



Main features

- Open plan kitchen/dining/lounge
- Modern bathroom
- Low maintenance rear garden
- Two allocated parking spaces to the front
- Summer house in rear garden used as a home office

Accommodation

GROUND FLOOR

Hallway

Cloakroom

Kitchen: (L-shaped) 10'5 x 6'10 (3.18m x 2.08m) plus 4'11 x 4'4 (1.50m x 1.32m)

Lounge/Diner: (L-shaped) 15'3 x 11'2 (4.65m x 3.41m) plus 9'2 x 3'6 (2.80m x 1.07m)

FIRST FLOOR

Landing

Family Bathroom

Bedroom 2: 10'8 x 8'1 (3.25m x 2.47m)

Bedroom 1: 14'6 x 8'2 (4.42m x 2.49m)

Bedroom 3: 9'0 x 6'3 (2.75m x 1.91m)

OUTSIDE

Rear Garden

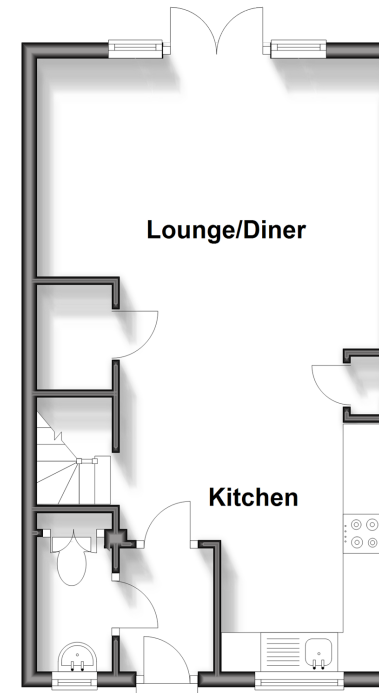
OUTBUILDING

Room 1

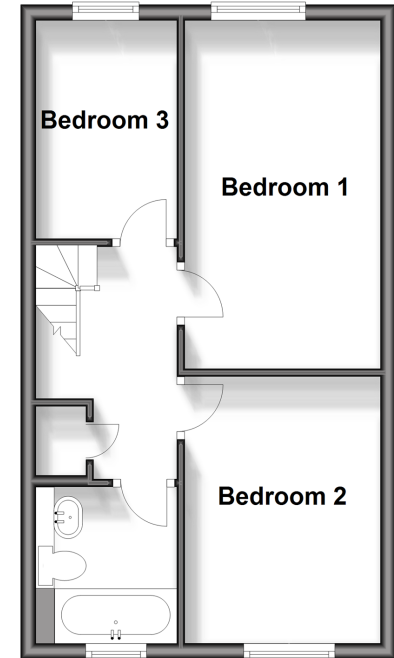
Call Peacehaven - 01273 584511 ■ cubittandwest.co.uk

- A private rental licensing scheme applies to some properties in this area, please contact us before proceeding
- Legal advice should be taken to verify fixtures/fittings, planning, alterations and/or lease details
- Appliances & services are untested, dimensions are approximate and floor plans are not to scale
- Through a Homewise Home For Life Plan people aged 60+ can secure this property for up to 59% less, by purchasing a Lifetime Lease.

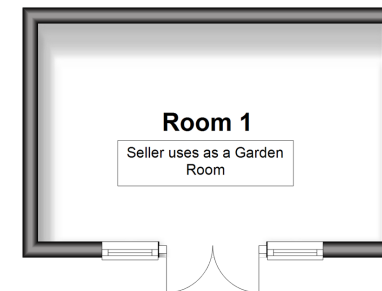
Ground Floor
Approx. 35.1 sq. metres (377.7 sq. feet)



First Floor
Approx. 35.6 sq. metres (383.6 sq. feet)



Outbuilding
Approx. 12.5 sq. metres (134.5 sq. feet)



31810987/20241023/CY/DGK