



Price

£420,000

Leasehold

3x  2x  1x 

**Corsica Hall, College
Road, Seaford, East
Sussex, BN25**

cubitt & west
Helping you move forwards



Main features

- Three double bedrooms
- Stunning seafront views
- Secure gated development
- Open plan lounge, kitchen and diner
- Two spacious modern bathrooms

Accommodation

FIRST FLOOR

Entrance way

Lounge/Kitchen/Diner: 24'3 x 21'9
(7.40m x 6.63m)

Family Bathroom

Bedroom 1 : 20'7 x 14'7 (6.28m x 4.45m)

Bedroom 2: 14'8 x 11'11 (4.47m x 3.63m)

Bathroom

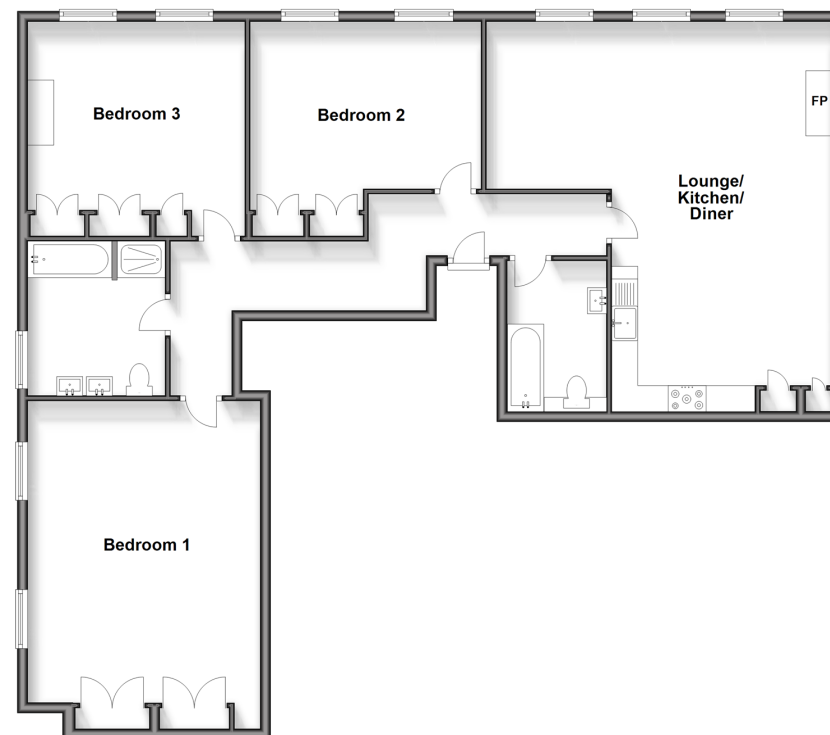
Bedroom 3: 13'9 x 13'9 (4.19m x 4.19m)

OUTSIDE

Communal Gardens

Allocated Parking

First Floor
Approx. 130.9 sq. metres (1409.0 sq. feet)



Call Peacehaven - 01273 584511 ■ cubittandwest.co.uk

- Legal advice should be taken to verify fixtures/fittings, planning, alterations and/or lease details
- Appliances & services are untested, dimensions are approximate and floor plans are not to scale



31810962/20240927/CY/DGK