

Price
£165,000

**Share of
Freehold**

1x  1x  1x 

**Fairfield, Sutton
Avenue, Peacehaven,
East Sussex, BN10**

OVER 60?

Secure this property
for up to **59% less!**

cubitt&west
Helping you move forwards



Main features

- Accessible ground floor flat
- Cosy balcony leading off the lounge
- Separate garage en block
- Easy access to bus stops
- Close to local shops, doctors' surgery and seafront

Accommodation

GROUND FLOOR

Lounge: 19'1 x 9'2 (5.82m x 2.80m)

Bedroom 1: 12'6 x 12'1 (3.81m x 3.69m)

Kitchen: 11'0 x 6'5 (3.36m x 1.96m)

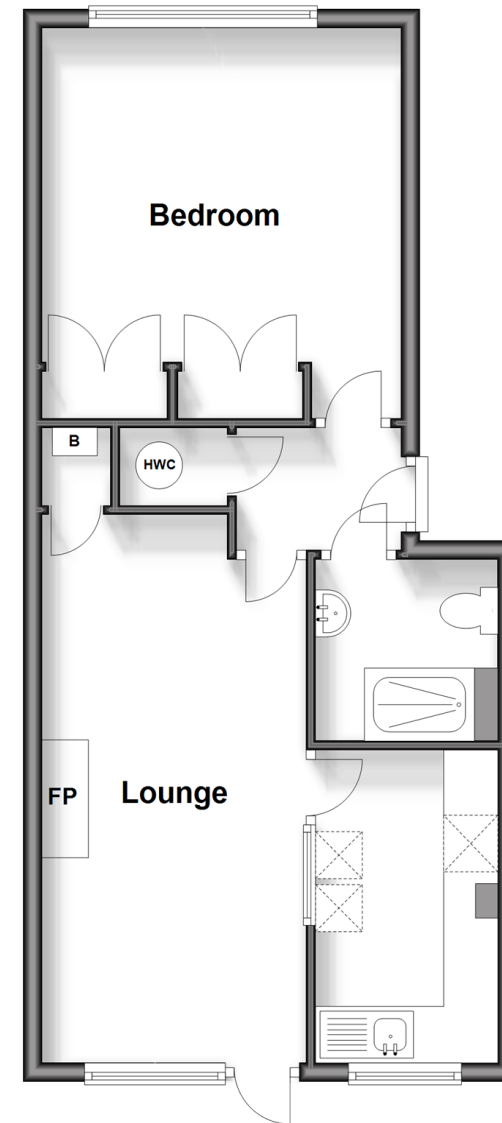
Shower Room

OUTSIDE

Garage

Ground Floor

Approx. 48.0 sq. metres (516.2 sq. feet)



Call Peacehaven - 01273 584511 ■ cubittandwest.co.uk

- Legal advice should be taken to verify fixtures/fittings, planning, alterations and/or lease details
- Appliances & services are untested, dimensions are approximate and floor plans are not to scale
- Through a Homewise Home For Life Plan people aged 60+ can secure this property for up to 59% less, by purchasing a Lifetime Lease.



31810912/20240930/DGK/DGK