



Price
£330,000

Freehold

2x  1x  1x 

**Seaview Road,
Peacehaven, East
Sussex, BN10**

OVER 60?

Secure this property
for up to **59% less!**

cubitt&west
Helping you move forwards



Main features

- Spacious home close to stunning cliff-top walks
- Good sized kitchen/diner
- Shower room with separate toilet
- Driveway parking for several cars
- Low maintenance, safe and secure rear garden
- Offered with no onward chain

Accommodation

GROUND FLOOR

Hallway

Lounge: 14'11 x 12'11 (4.55m x 3.94m)

Kitchen/Diner: 14'7 x 7'11 (4.45m x 2.41m)

Bedroom 1 : 12'11 x 10'11 (3.94m x 3.33m)

Bedroom 2: 11'11 x 11'11 (3.63m x 3.63m)

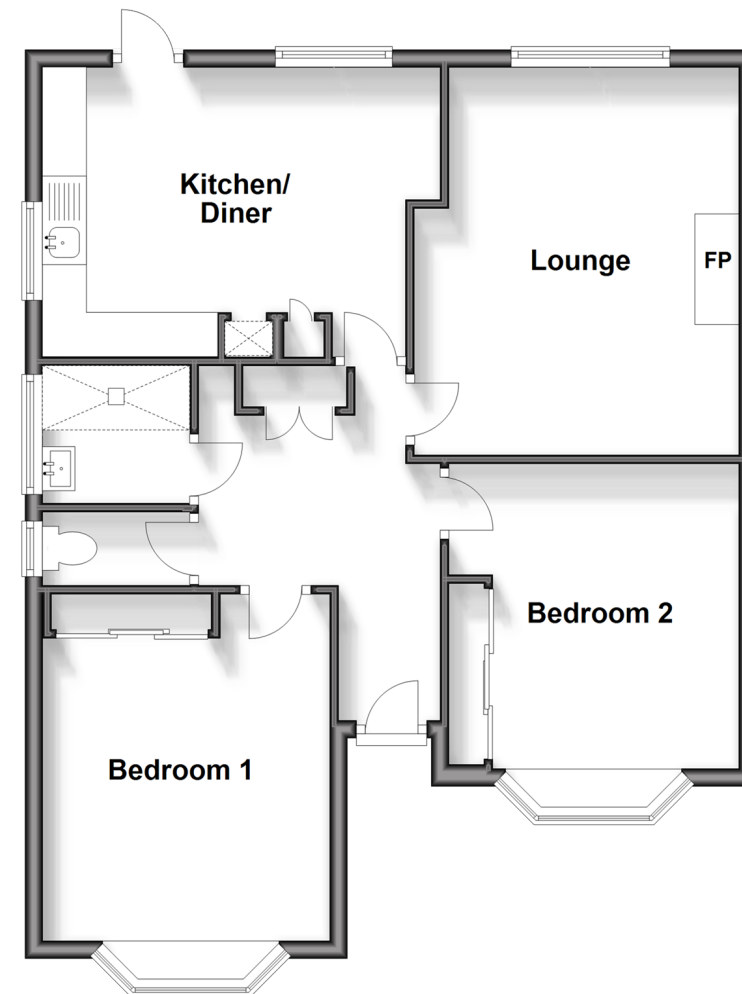
Shower Room
Separate Toilet

OUTSIDE

Front & Rear Gardens
Driveway

Ground Floor

Approx. 68.9 sq. metres (741.9 sq. feet)



Call Peacehaven - 01273 584511 ■ cubittandwest.co.uk

- A private rental licensing scheme applies to some properties in this area, please contact us before proceeding
- Legal advice should be taken to verify fixtures/fittings, planning, alterations and/or lease details
- Appliances & services are untested, dimensions are approximate and floor plans are not to scale
- Through a Homewise Home For Life Plan people aged 60+ can secure this property for up to 59% less, by purchasing a Lifetime Lease.



31810915/20250228/SB/DGK