

OVER 60?

Secure this property
for up to **59% less!**



Price

£525,000

Freehold

4x  2x  3x 

Ashmore Close, Peacehaven, BN10

cubitt & west
Helping you move forwards



Main features

- **Corner plot**
- **Spacious rooms throughout**
- **Main bedroom benefiting an ensuite**
- **Utility Room**
- **Countryside views**
- **Safe and secluded rear garden with a raised lawn and decked area**

Accommodation

GROUND FLOOR

Entrance Porch
 Lounge: 17'9 x 12'7 (5.41m x 3.84m)
 Dining Area: 12'2 x 8'9 (3.71m x 2.67m)
 Kitchen: 14'4 x 12'3 (4.37m x 3.74m)
 Utility Room: 7'8 x 5'9 (2.34m x 1.75m)
 Study: 9'8 x 7'6 (2.95m x 2.29m)
 Cloakroom

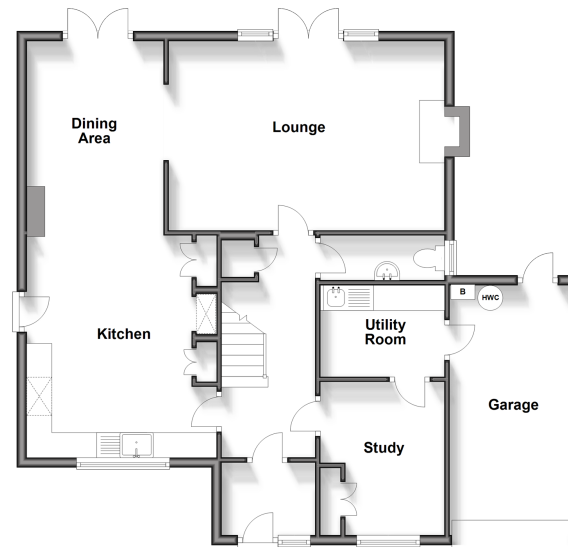
FIRST FLOOR

Landing
 Bedroom 1: 13'5 x 12'5 (4.09m x 3.79m)
 En-Suite Shower Room
 Bedroom 2: 12'4 x 9'9 (3.76m x 2.97m)
 Bedroom 3: 12'4 x 9'9 (3.76m x 2.97m)
 Bedroom 4: 11'1 x 9'9 (3.38m x 2.97m)
 Bathroom

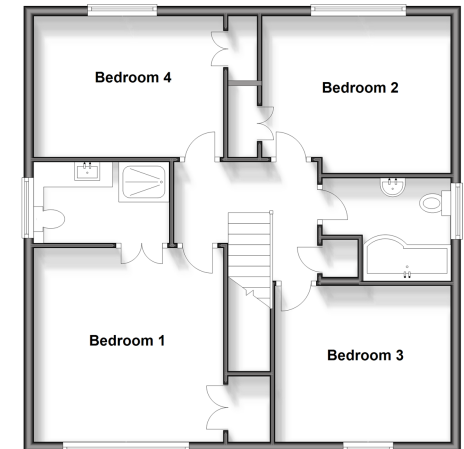
OUTSIDE

Front Garden

Ground Floor
 Approx. 89.0 sq. metres (957.8 sq. feet)



First Floor
 Approx. 70.8 sq. metres (761.8 sq. feet)



Call Peacehaven - 01273 584511 ■ cubittandwest.co.uk

■ Legal advice should be taken to verify fixtures/fittings, planning, alterations and/or lease details
 ■ Through a Homewise Home For Life Plan people aged 60+ can secure this property for up to 59% less, by purchasing a Lifetime Lease.

■ Appliances & services are untested, dimensions are approximate and floor plans are not to scale



31810072/20240525/CY/DGK