



Price
£230,000

**Share of
Freehold**

2x  1x  1x 

**Seacliffe, South Coast
Road, Peacehaven, BN10**

cubitt & west
Helping you move forwards



Main features

- Spacious ground floor purpose built flat
- Good size lounge with sea view
- Modern kitchen and bathroom
- Close to great walks and cliff top
- Easy access to Telscombe Tye

Accommodation

GROUND FLOOR

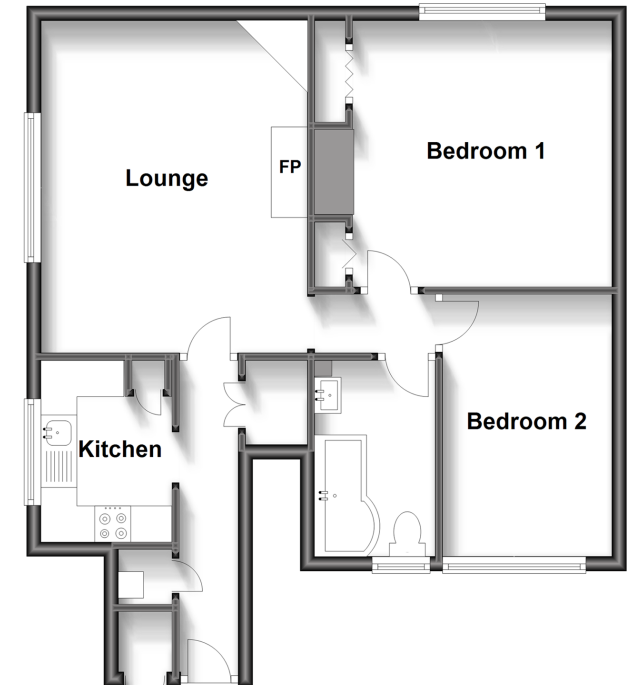
- Hallway
- Lounge: 14'10 x 12'8 (4.52m x 3.86m)
- Kitchen: 8'2 x 5'9 (2.49m x 1.75m)
- Bedroom 1: 11'10 x 11'10 (3.61m x 3.61m)
- Bedroom 2: 11'7 x 7'6 (3.53m x 2.29m)
- Bathroom

OUTSIDE

- Communal Gardens

Ground Floor

Approx. 59.6 sq. metres (641.1 sq. feet)



Call Peacehaven - 01273 584511 ■ cubittandwest.co.uk

■ Legal advice should be taken to verify fixtures/fittings, planning, alterations and/or lease details

■ Appliances & services are untested, dimensions are approximate and floor plans are not to scale



31810664/20240426/GB/DGK