

OVER 60?

Secure this property
for up to **59% less!**



Price

£650,000

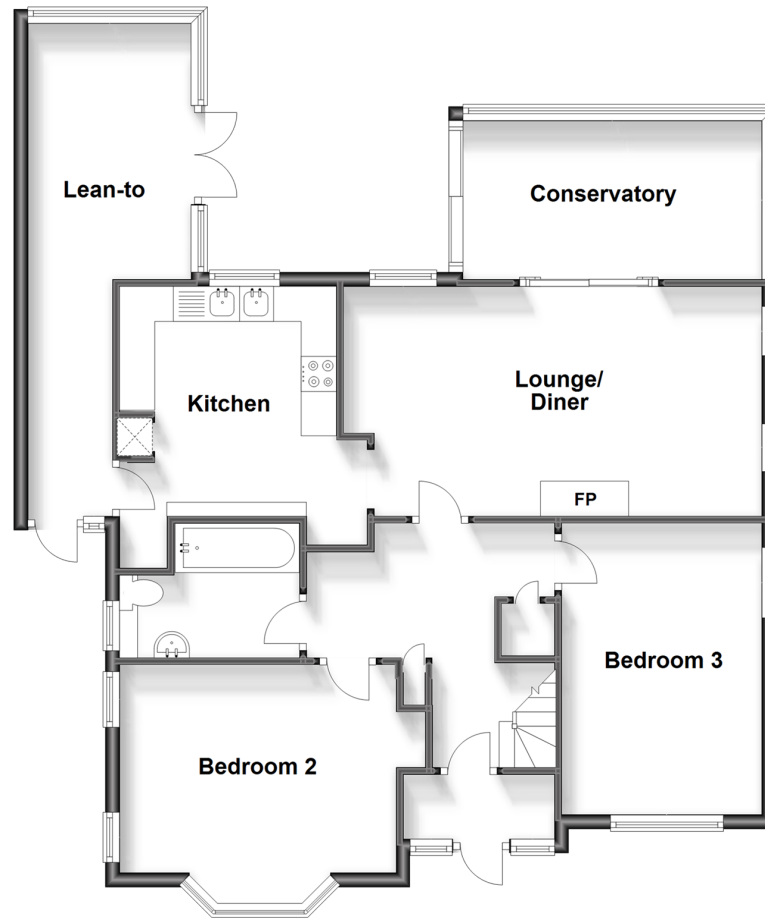
Freehold

3x  1x  1x 

Old Court Close, Brighton, BN1

cubitt & west
Helping you move forwards

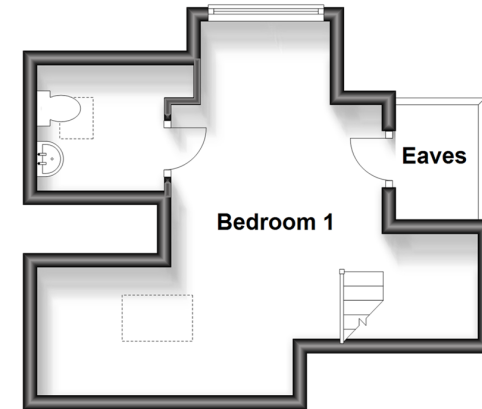
Ground Floor
Approx. 95.7 sq. metres (1029.8 sq. feet)



Lower Ground Floor
Approx. 11.8 sq. metres (126.8 sq. feet)



First Floor
Approx. 22.7 sq. metres (244.4 sq. feet)



Accommodation

GROUND FLOOR

Entrance Hall

Lounge / Diner: 20'1 x 10'6 (6.13m x 3.20m)

Kitchen: 10'6 x 9'9 (3.20m x 2.97m)

Lean-To: 23'1 x 7'3 at widest point (7.04m x 2.21m)

Bedroom 2: 12'9 x 11'9 (3.89m x 3.58m)

Bedroom 3: 14'2 x 9'4 (4.32m x 2.85m)

FIRST FLOOR

Landing

Bedroom 1: 16'9 (5.11m) narrowing to 8'5 (2.57m) x 15'1 at widest point (4.60m)

OUTSIDE

Garage & Off Road Parking

Front & Rear Garden



Main features

- The most wonderful, mature rear garden with seasonal planting, quaint seating areas and sustainable allotment
- Large pottery workshop or ideal office space
- Beautiful, far-reaching views over Brighton
- Great size driveway with under home garage
- Fantastic location on a quiet cul de sac next to a stunning forest with easy commuter links to bus routes, trains and A27 access

Nearest Schools

Primary Schools: Patcham Junior School 0.5 miles, Balfour Junior School 0.6 miles, St Bernadette's Catholic Primary 0.6 miles

Secondary Schools: Patcham High School 0.4 miles,

Transport Information

Train Stations: Preston Park 0.7 miles, Moulsecoomb 1.3 miles, London Road 1.3 miles

Address

Old Court Close, Brighton, BN1

Directions

For directions to this property please contact us.



cubitt&west
Helping you move forwards

Call Patcham Branch 01273 541934 ■ cubittandwest.co.uk



■ Legal advice should be taken to verify fixtures/fittings, planning, alterations and/or lease details ■ Appliances & services are untested, dimensions are approximate and floor plans are not to scale
■ Through a Homewise Home For Life Plan people aged 60+ can secure this property for up to 59% less, by purchasing a Lifetime Lease.



31707511/20231109/AB1/EBO