



Guide Price
£350,000

Freehold

2x  1x  1x 

**Middle Road,
Shoreham-By-Sea, BN43**

OVER 60?

Secure this property
for up to **59% less!**

cubitt&west
Helping you move forwards



Main features

- Very large bedrooms
- Inviting hallway with storage
- Fully renovated through sellers' ownership
- Open plan lounge / dining area into modern fresh kitchen
- In popular Shoreham by Sea with fantastic bus links and easy access to A27

Accommodation

GROUND FLOOR

Hallway

Lounge: 13'3 x 11'5 (4.04m x 3.48m)

Dining Area: 9'2 x 8'3 (2.80m x 2.52m)

Kitchen: 10'8 x 10'0 (3.25m x 3.05m)

FIRST FLOOR

Landing

Bedroom 1: 16'5 x 11'0 (5.01m x 3.36m)

Bedroom 2: 10'11 x 9'3 (3.33m x 2.82m)

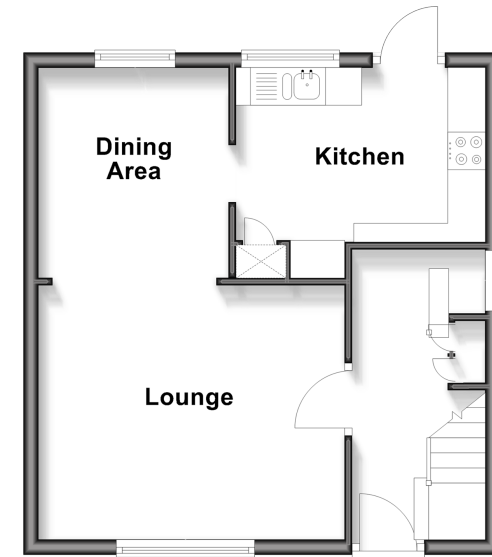
Bathroom

OUTSIDE

Front & Rear Garden

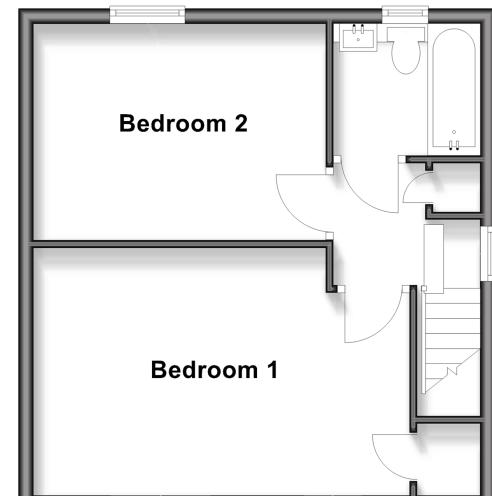
Ground Floor

Approx. 37.3 sq. metres (401.5 sq. feet)



First Floor

Approx. 37.3 sq. metres (401.5 sq. feet)



Call Patcham - 01273 541934 ■ cubittandwest.co.uk

- Legal advice should be taken to verify fixtures/fittings, planning, alterations and/or lease details
- Appliances & services are untested, dimensions are approximate and floor plans are not to scale
- Through a Homewise Home For Life Plan people aged 60+ can secure this property for up to 50% less, by purchasing a Lifetime Lease.



31707740/20251121/ZC/EBO