



Price
£600,000

Freehold

3x  2x  1x 

**Denton Drive,
Hollingbury, BN1**

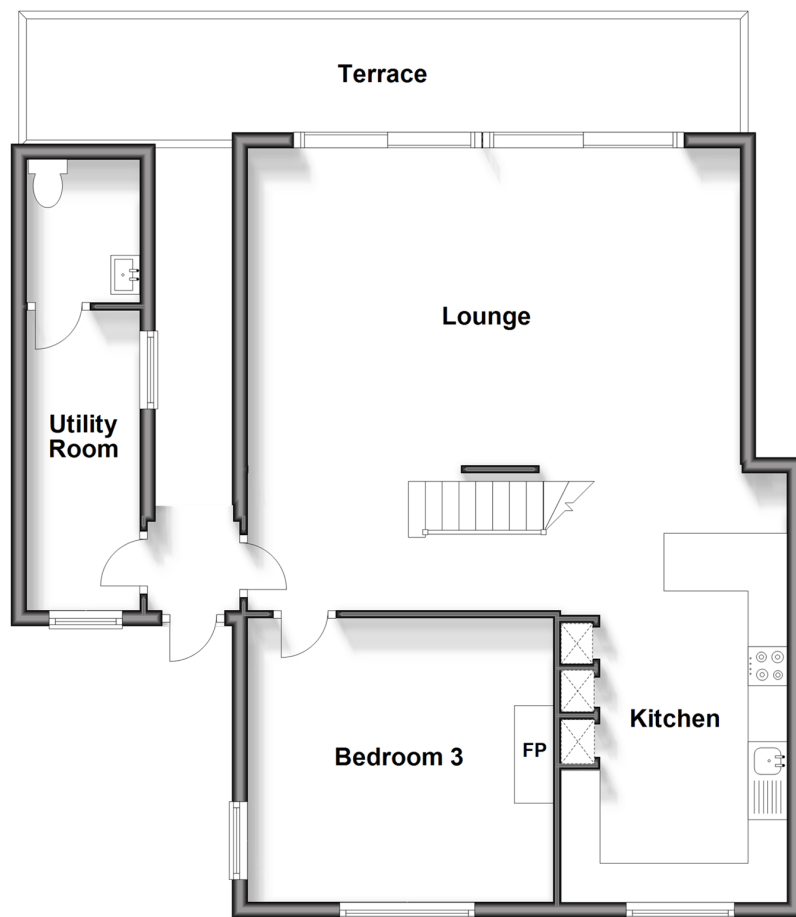
OVER 60?

Secure this property
for up to **59% less!**

cubitt & west
Helping you move forwards

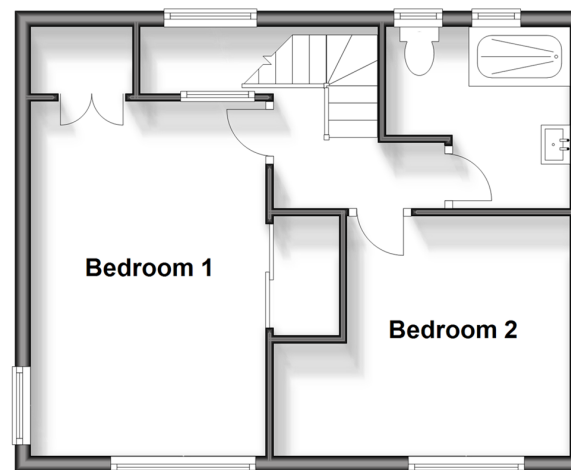
Ground Floor

Approx. 74.4 sq. metres (800.8 sq. feet)



First Floor

Approx. 38.0 sq. metres (409.5 sq. feet)



Accommodation

GROUND FLOOR

Entrance Hall

Lounge: 31'6 (9.61m) narrowing to 19'2 (5.85m) x 20'6 (6.25m)

Terrace

Kitchen: 18'3 x 7'5 (5.57m x 2.26m)

Utility Room: 12'6 x 4'8 (3.81m x 1.42m)

Cloakroom

Bedroom 3: 11'9 x 11'7 (3.58m x 3.53m)

FIRST FLOOR

Landing

Bedroom 1: 15'2 x 9'9 (4.63m x 2.97m)

Bedroom 2: 10'3 x 9'7 at narrowest point (3.13m x 2.92m)

Shower Room

OUTSIDE

Driveway

Front & Rear Garden



Main features

- Stunning ultra-modern kitchen and lounge with industrial inspired architectural brilliance
- Breathtaking viewing platform across the downs through the expanse of glass to the rear
- Self-contained outbuilding, huge potential for business use, Air BnB, office or utility space!
- Substantial driveway
- Close to local amenities, great schools and easy access to the A27 & A23



Nearest Schools

Primary Schools: Carden Primary 0.4 miles, Patcham Junior School 0.7 miles, St Joseph's Catholic Primary 1.3 miles

Secondary Schools: Patcham High School 0.8 miles,



Transport Information

Train Stations: Preston Park 1.8 miles, London Road 2.4 miles, Hove 2.4 miles



Address

Denton Drive, Hollingbury, BN1



Directions

For directions to this property please contact us.



cubitt&west
Helping you move forwards

Call Patcham Branch 01273 541934 ■ cubittandwest.co.uk



- Legal advice should be taken to verify fixtures/fittings, planning, alterations and/or lease details
- Appliances & services are untested, dimensions are approximate and floor plans are not to scale
- Through a Homewise Home For Life Plan people aged 60+ can secure this property for up to 59% less, by purchasing a Lifetime Lease.



31707381/20240131/TB1/EBO