



Price
£550,000

Freehold

4x  1x  1x 

**Highfield Crescent,
Brighton BN1**

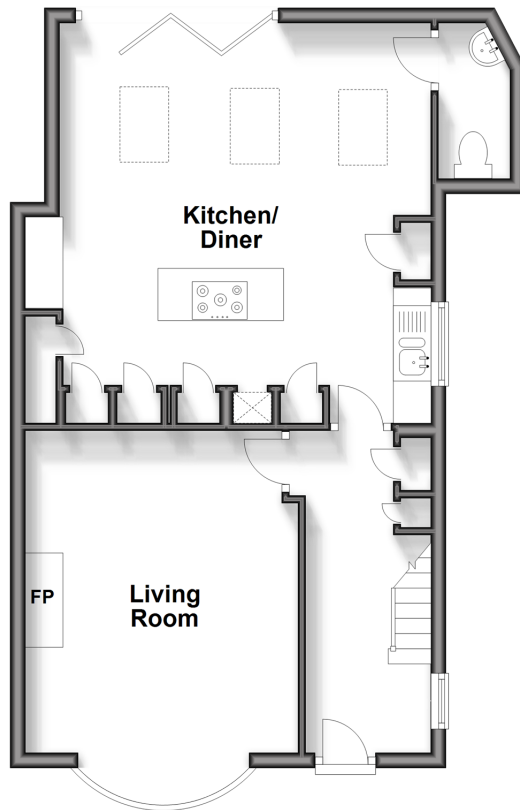
OVER 60?

Secure this property
for up to **59% less!**

cubitt&west
Helping you move forwards

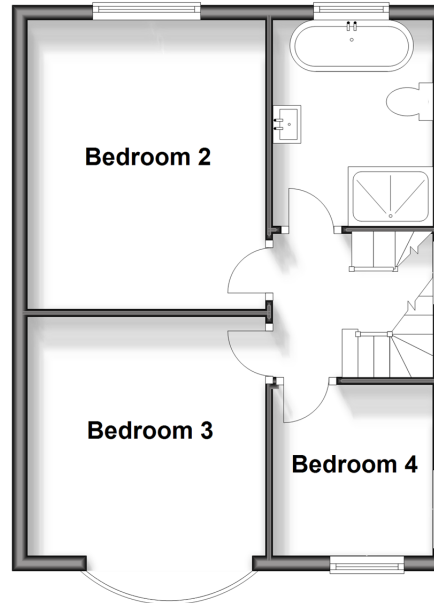
Ground Floor

Approx. 53.3 sq. metres (574.2 sq. feet)



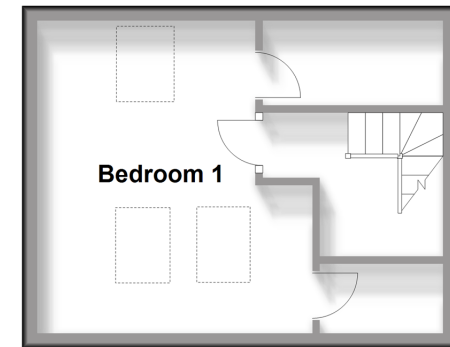
First Floor

Approx. 38.6 sq. metres (415.0 sq. feet)



Second Floor

Approx. 22.3 sq. metres (239.9 sq. feet)



Accommodation

GROUND FLOOR

Entrance Hall

Living Room: 17'2 x 11'8 (5.24m x 3.56m)

Kitchen / Diner: 17'5 x 17'3 at widest point (5.31m x 5.26m)

Cloakroom

FIRST FLOOR

Landing

Bedroom 2: 14'4 x 10'3 (4.37m x 3.13m)

Bedroom 3: 12'3 x 10'4 (3.74m x 3.15m)

Bedroom 4: 7'3 x 6'10 (2.21m x 2.08m)

Bathroom

SECOND FLOOR

Landing

Bedroom 1: 13'5 (4.09m) x 12'4 (3.76m)

narrowing to 10'2 (3.10m)

OUTSIDE

Garage & Off Road Parking

Front & Rear Garden



Main features

- Stunning open plan kitchen / diner with handy downstairs cloakroom and bi-fold doors
- Separate living room with feature bay window
- Generous family bathroom with freestanding bath and separate shower
- Landscaped, modern garden with barbecue area and views
- Fantastic location close to local amenities, good bus links and easy access to the A27 and A23



Nearest Schools

Primary Schools: Carden Primary 0.7 miles, Patcham Junior School 0.9 miles, Balfour Junior School 1.3 miles

Secondary Schools: Patcham High School 0.8 miles, Dorothy Stringer High School 1.0 miles, Patcham House



Transport Information

Train Stations: Preston Park 1.4 miles, London Road 2.0 miles, Hove 2.2 miles



Address

Highfield Crescent, Brighton BN1



Directions

For directions to this property please contact us.



cubitt&west
Helping you move forwards

Call Patcham Branch 01273 541934 ■ cubittandwest.co.uk



■ Legal advice should be taken to verify fixtures/fittings, planning, alterations and/or lease details ■ Appliances & services are untested, dimensions are approximate and floor plans are not to scale
■ Through a Homewise Home For Life Plan people aged 60+ can secure this property for up to 59% less, by purchasing a Lifetime Lease.



31704752/20240129/ZC/EBO