



Price

£280,000

Leasehold

2x  1x  1x 

**Pullman Haul, New
England Street,
Brighton, East Sussex,
BN1**

cubitt&west
Helping you move forwards



Main features

- Modern contemporary flat in the heart of Brighton
- Close to Brighton station
- Sunny balcony
- Passenger lift and communal bike storage
- Chain free

Accommodation

FIFTH FLOOR

Entrance Hall

Lounge : 16'6 x 10'8 (5.03m x 3.25m)

Balcony

Kitchen : 12'8 x 9'7 (3.86m x 2.92m)

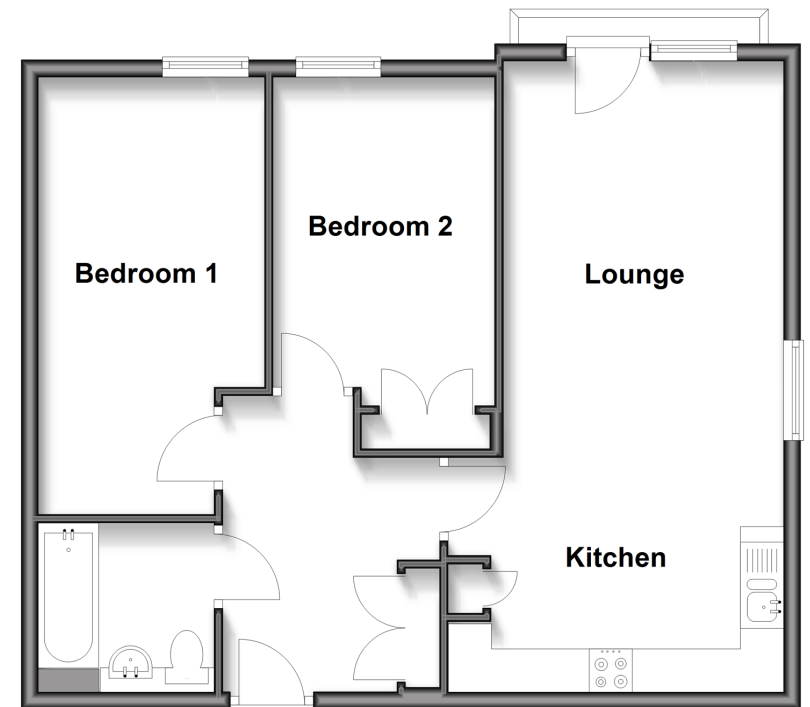
Bedroom 1: 16'7 x 8'6 (5.06m x 2.59m)

Bedroom 2: 12'6 x 8'7 (3.81m x 2.62m)

Bathroom

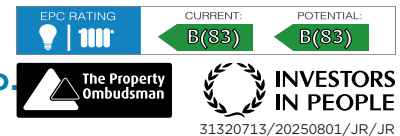
Fifth Floor

Approx. 62.3 sq. metres (670.4 sq. feet)



Call Lewes Road Brighton - 01273 604377 ■ cubittandwest.co.uk

- Legal advice should be taken to verify fixtures/fittings, planning, alterations and/or lease details
- Appliances & services are untested, dimensions are approximate and floor plans are not to scale



31320713/20250801/JR/JR