



Price

£270,000

Leasehold

2x  1x  1x 

**Whippingham Road,
Brighton, East Sussex,
BN2**

cubitt & west
Helping you move forwards



Main features

- Period conversion apartment, in good condition
- Modern kitchen & bathroom
- Popular Elm Grove residential area
- Easy access into Brighton city centre
- No onward chain

Accommodation

FIRST FLOOR

Entrance Hall

Lounge/Kitchen : 15'1 into bay x 13'9
(4.60m x 4.19m)

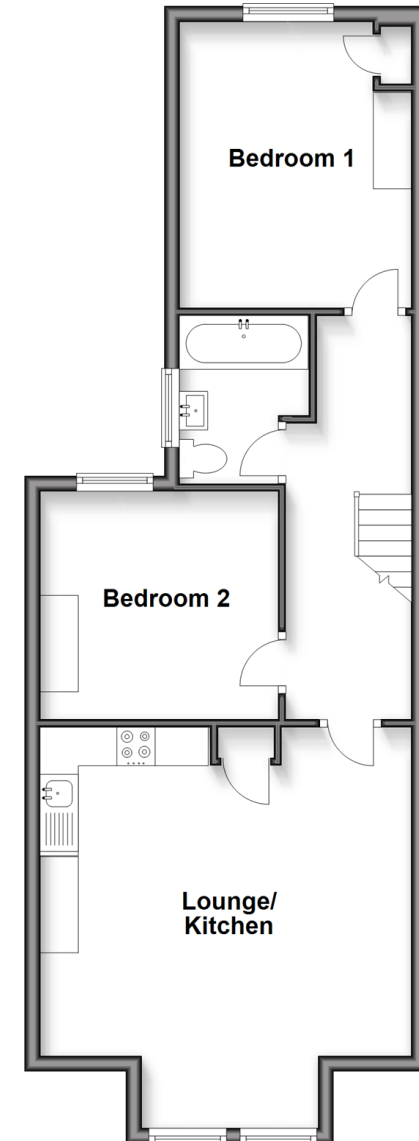
Bedroom 1: 12'1 x 9'10 (3.69m x 3.00m)

Bedroom 2 : 9'10 x 9'2 (3.00m x 2.80m)

Bathroom

First Floor

Approx. 56.2 sq. metres (605.1 sq. feet)



Call Lewes Road - 01273 604377 ■ cubittandwest.co.uk

- Legal advice should be taken to verify fixtures/fittings, planning, alterations and/or lease details
- Appliances & services are untested, dimensions are approximate and floor plans are not to scale



38074495/20250205/AF/JR