



**Price**  
**£375,000**

**Leasehold**

3x  1x  1x 

**Totland Road, Brighton,  
East Sussex, BN2**

**OVER 60?**

Secure this property  
for up to **59% less!**

**cubitt&west**  
Helping you move forwards





## Main features

- Modern apartment with its own street entrance
- Sunny rear garden with additional storage
- Quiet yet easily accessible location, city within walking distance
- Long lease and low maintenance charges
- Ideal for first time buyers

## Accommodation

### GROUND FLOOR

Entrance Hallway

Living Room: 14'9 x 10'9 (4.50m x 3.28m)

Kitchen: 8'2 x 7'10 (2.49m x 2.39m)

Bathroom

Bedroom 1: 13'7 into bay x 8'4 (4.14m x 2.54m)

Bedroom 2: 13'6 into bay x 8'2 (4.12m x 2.49m)

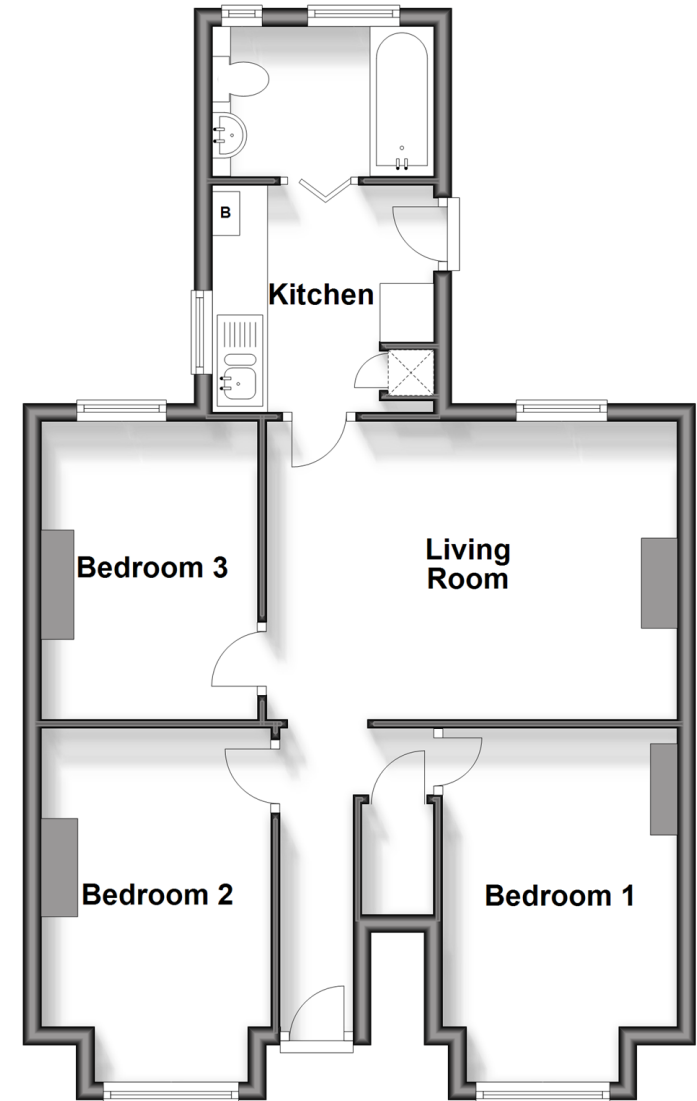
Bedroom 3: 10'8 x 7'9 (3.25m x 2.36m)

### OUTSIDE

Rear Garden

## Ground Floor

Approx. 57.8 sq. metres (621.7 sq. feet)



Call Lewes Road Brighton - 01273 604377 ■ [cubittandwest.co.uk](https://www.cubittandwest.co.uk)

- Legal advice should be taken to verify fixtures/fittings, planning, alterations and/or lease details
- Appliances & services are untested, dimensions are approximate and floor plans are not to scale
- Through a Homewise Home For Life Plan people aged 60+ can secure this property for up to 59% less, by purchasing a Lifetime Lease.



30510407/20250729/AF/EM