



Guide Price
£600,000

Freehold

4x  2x  2x 

**Whippingham Road,
Brighton, BN2**

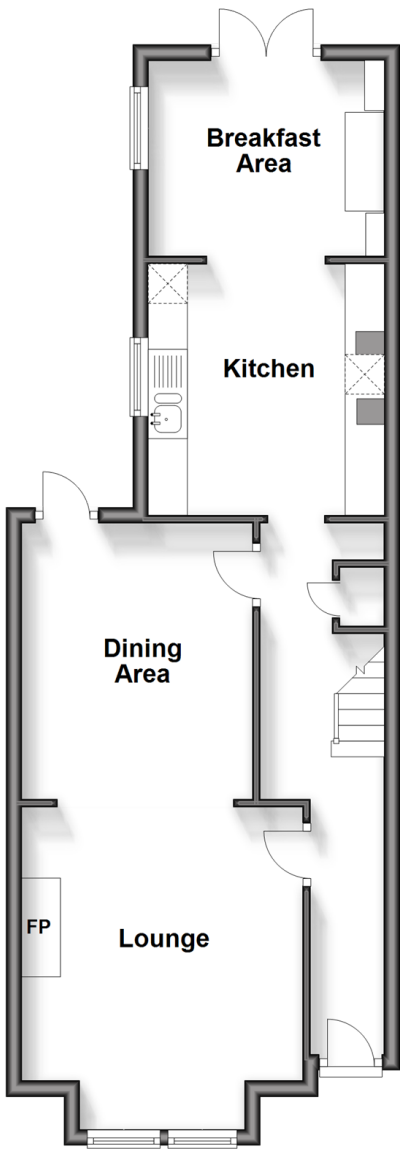
OVER 60?

Secure this property
for up to **59% less!**

cubitt & west
Helping you move forwards

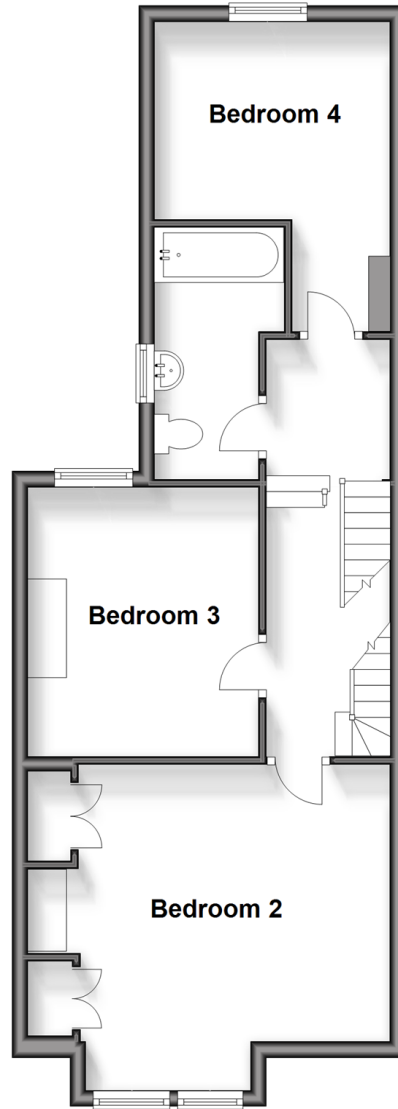
Ground Floor

Approx. 51.5 sq. metres (553.9 sq. feet)



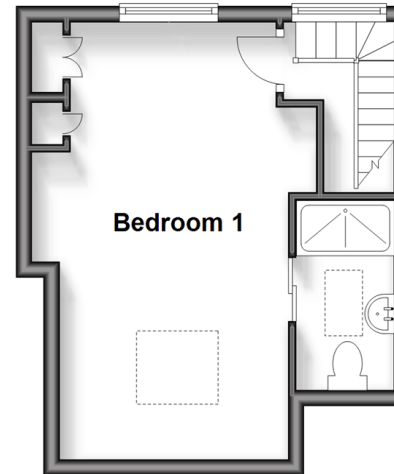
First Floor

Approx. 51.7 sq. metres (557.0 sq. feet)



Second Floor

Approx. 23.7 sq. metres (254.8 sq. feet)



Accommodation

GROUND FLOOR

Entrance Hall

Lounge : 13'2 into bay x 11'8 into alcove (4.02m x 3.56m)

Dining Area: 11'4 x 9'6 into alcove (3.46m x 2.90m)

Kitchen: 10'3 x 9'9 (3.13m x 2.97m)

Breakfast Area: 10'3 x 8'1 (3.13m x 2.47m)

FIRST FLOOR

Landing

Bedroom 2: 14'1 into alcove x 13'3 into bay (4.30m x 4.04m)

Bedroom 3: 11'5 x 9'6 into alcove (3.48m x 2.90m)

Bedroom 4: 13'2 x 10'1 into alcove (4.02m x 3.08m)

Bathroom

SECOND FLOOR

Landing

Bedroom 1: 18'2 x 11'7 (5.54m x 3.53m)

En-Suite Shower Room

OUTSIDE

Front & Rear Garden



Main features

- Large end of terrace family home, situated in quiet residential location
- Excellent condition throughout
- Wood burner feature
- Close to shops, transport links and excellent schools
- Offered chain free

Nearest Schools

Primary Schools: Elm Grove Primary 0.1 miles, St Martin's CofE Primary 0.2 miles, Fairlight Primary 0.4 miles
Secondary Schools: Dorothy Stringer School 1.2 miles, Varndean 1.7 miles
Further Education: City College Brighton & Hove 1.0 miles

Transport Information

Train Stations: Brighton 1.1 miles, Moulsecomb 1.2 miles, London Road 1.3 miles

Address

Whippingham Road, Brighton, BN2

Directions

For directions to this property please contact us.



cubitt&west
Helping you move forwards

Call Lewes Road Brighton Branch 01273 604377 ■ [cubittandwest.co.uk](https://www.cubittandwest.co.uk)



- Legal advice should be taken to verify fixtures/fittings, planning, alterations and/or lease details
- Appliances & services are untested, dimensions are approximate and floor plans are not to scale
- Through a Homewise Home For Life Plan people aged 60+ can secure this property for up to 59% less, by purchasing a Lifetime Lease.



31317249/20241002/JR/JR