



Price
£375,000

Freehold

2x  1x  2x 

**Melbourne Street,
Brighton, East Sussex,
BN2**

cubitt & west
Helping you move forwards



Main features

- Period terraced house
- Easy to maintain front and rear patio
- Excellent condition throughout
- Close to shops, and easy access to transport links around the city
- Chain free

Accommodation

GROUND FLOOR

Entrance Hall

Dining Room : 11'1 x 9'5 (3.38m x 2.87m)

Lounge : 13'7 x 9'9 (4.14m x 2.97m)

Kitchen : 7'7 x 7'4 (2.31m x 2.24m)

Bathroom

FIRST FLOOR

Landing

Bedroom 1 : 12'0 x 10'9 (3.66m x 3.28m)

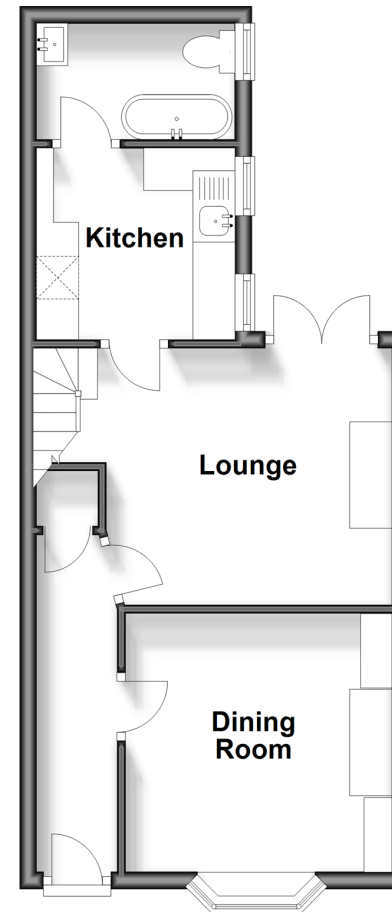
Bedroom 2 : 9'9 x 9'7 (2.97m x 2.92m)

OUTSIDE

Front & Rear Patio

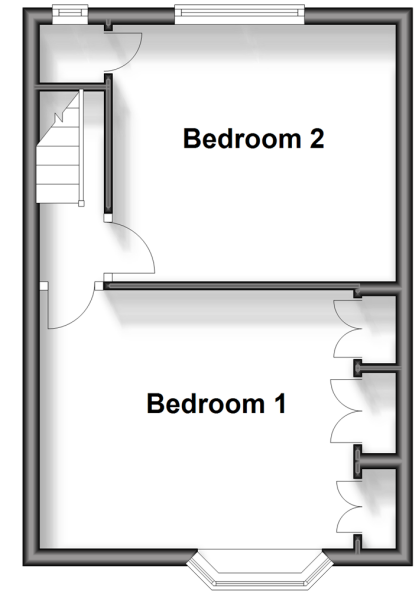
Ground Floor

Approx. 35.0 sq. metres (377.0 sq. feet)



First Floor

Approx. 26.1 sq. metres (280.4 sq. feet)



Call Lewes Road Brighton - 01273 604377 ■ cubittandwest.co.uk

- Legal advice should be taken to verify fixtures/fittings, planning, alterations and/or lease details
- Appliances & services are untested, dimensions are approximate and floor plans are not to scale



31320597/20240406/SEH/JR