



Price
£500,000

Freehold

3x  1x  1x 

**Stanmer Villas, Brighton,
East Sussex, BN1**

cubitt&west
Helping you move forwards



Main features

- Beautifully presented home in popular Hollingdean
- Friendly community, just moments from Fiveways with cafes and shops
- Lovely, large kitchen/dining/family space that leads to the garden
- Close to excellent schools
- Brighton centre is easily accessible

Accommodation

GROUND FLOOR

Entrance Hall

Lounge : 13'8 into bay x 12'5 (4.17m x 3.79m)

Kitchen/Dining Room : 19'2 x 17'3 (5.85m x 5.26m)

FIRST FLOOR

Landing

Bedroom 1 : 13'8 into bay x 11'4 (4.17m x 3.46m)

Bedroom 2 : 11'6 x 10'5 (3.51m x 3.18m)

Bedroom 3 : 8'3 x 7'6 (2.52m x 2.29m)

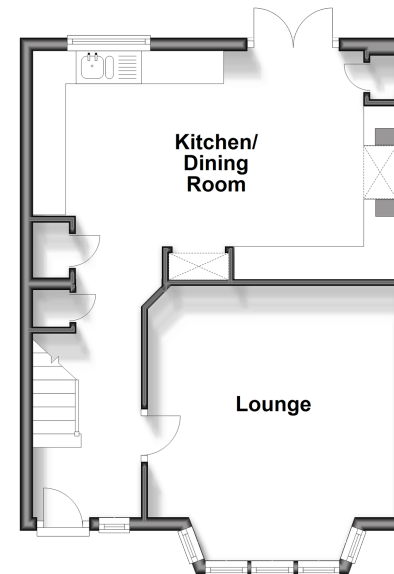
Bathroom

OUTSIDE

Front & Rear Garden

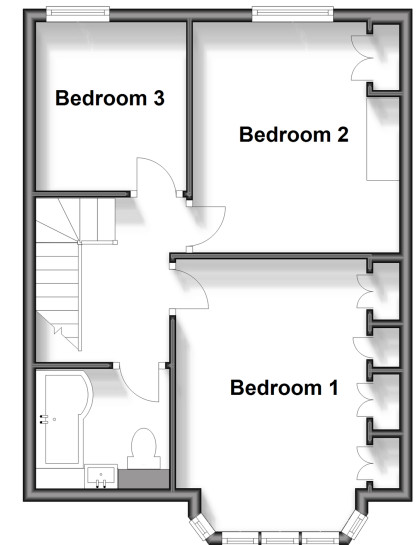
Ground Floor

Approx. 40.9 sq. metres (440.5 sq. feet)



First Floor

Approx. 40.9 sq. metres (440.2 sq. feet)



Call Fiveways - 01273 564444 ■ cubittandwest.co.uk

- Legal advice should be taken to verify fixtures/fittings, planning, alterations and/or lease details
- Appliances & services are untested, dimensions are approximate and floor plans are not to scale



30510498/20241128/AF/EM