



Price

£900,000

Freehold

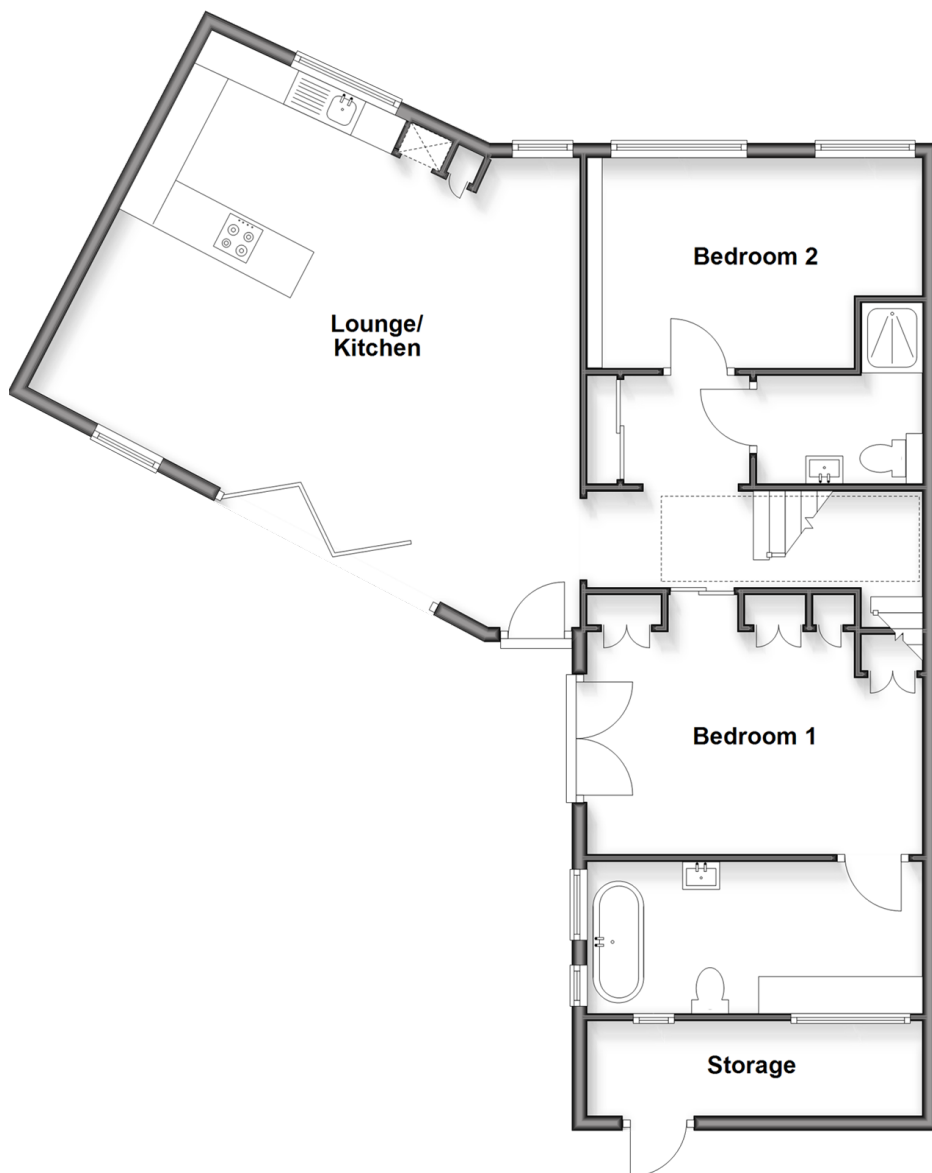
3x  2x  1x 

Southdown Road, Brighton, East Sussex,
BN1

cubitt&west
Helping you move forwards

Ground Floor

Approx. 97.6 sq. metres (1051.1 sq. feet)



First Floor

Approx. 14.5 sq. metres (155.9 sq. feet)



Accommodation

GROUND FLOOR

Lounge/Kitchen : 28'10 x 24'10 (8.79m x 7.57m)

Hallway

Bedroom 2: 14'11 x 9'3 (4.55m x 2.82m)

Shower Room

Bedroom 1: 13'9 x 11'1 (4.19m x 3.38m)

En Suite Bathroom

FIRST FLOOR

Landing

Bedroom 3: 11'1 x 10'4 (3.38m x 3.15m)

OUTSIDE

Patio/Decking



Main features

- Blakers House, a unique and modern home in the sought after 'golden triangle' area of Fiveways
- Opposite Blakers Park
- Level access and bungalow style living (with an upstairs bedroom)
- Secluded and sunny garden with bike storage
- No onward chain



Nearest Schools

Primary Schools: Downs Junior School 0.2 miles, Balfour Junior School 0.3 miles, St Joseph's Catholic Primary 0.4 miles
Secondary Schools: Dorothy Stringer High School 0.4 miles, Varndean School 0.5 miles



Transport Information

Train Stations: London Road 0.4 miles, Preston Park 0.7 miles, Brighton 1.6 miles



Address

Southdown Road, Brighton, East Sussex, BN1



Directions

For directions to this property please contact us.



cubitt&west
Helping you move forwards

Call Fiveways Branch 01273 564444 ■ [cubittandwest.co.uk](https://www.cubittandwest.co.uk)



■ Legal advice should be taken to verify fixtures/fittings, planning, alterations and/or lease details ■ Appliances & services are untested, dimensions are approximate and floor plans are not to scale



EPC RATING



30510725/20250717/AF/EM