



Price
£495,000

Freehold

3x  1x  1x 

**Brentwood Road,
Brighton, East Sussex,
BN1**

OVER 60?

Secure this property
for up to **59% less!**

cubitt&west
Helping you move forwards



Main features

- Bright, sunny and immaculate family home located in Hollingdean
- Close to Fiveways and within easy reach of Brighton city centre
- Extended at the rear to provide large living space
- Lovely far reaching sea views from upstairs
- Sunny garden, garage and driveway

Accommodation

GROUND FLOOR

Entrance Hall

Lounge: 13'10 x 12'9 (4.22m x 3.89m)

Kitchen/Dining Room : 20'0 x 19'3 (6.10m x 5.87m)

FIRST FLOOR

Landing

Bedroom 1: 13'10 x 10'2 (4.22m x 3.10m)

Bedroom 2: 11'1 x 10'2 (3.38m x 3.10m)

Bedroom 3: 8'7 x 7'6 (2.62m x 2.29m)

Bathroom

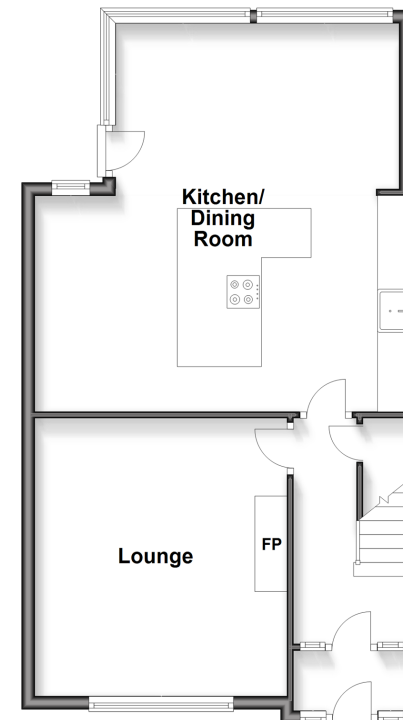
OUTSIDE

Front & Rear Garden

Garage & Shared Driveway

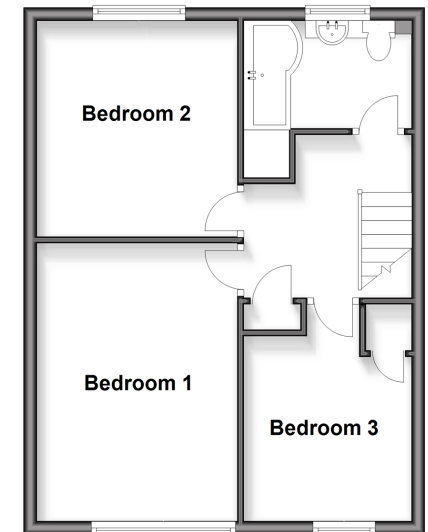
Ground Floor

Approx. 56.7 sq. metres (610.4 sq. feet)



First Floor

Approx. 44.7 sq. metres (480.9 sq. feet)



Call Fiveways - 01273 564444 ■ cubittandwest.co.uk

- Legal advice should be taken to verify fixtures/fittings, planning, alterations and/or lease details
- Appliances & services are untested, dimensions are approximate and floor plans are not to scale
- Through a Homewise Home For Life Plan people aged 60+ can secure this property for up to 59% less, by purchasing a Lifetime Lease.



30510582/20250308/AF/EM