



Price
£525,000

Freehold

3x  1x  1x 

**Barnett Road,
Hollingdean, Brighton,
East Sussex, BN1**

cubitt&west
Helping you move forwards



Main features

- Family home in friendly community
- Large garden with lots of sunlight
- Open plan kitchen/dining space, ideal for family living/entertaining
- Close to Fiveways with coffee shops and more
- Walking distance to excellent schools and popular parks

Accommodation

GROUND FLOOR

Entrance Hall

Lounge : 13'9 x 11'9 (4.19m x 3.58m)

Dining Room: 11'9 x 11'6 (3.58m x 3.51m)

Kitchen: 17'1 x 6'7 (5.21m x 2.01m)

FIRST FLOOR

Landing

Bedroom 1: 11'10 x 9'8 (3.61m x 2.95m)

Bedroom 2: 12'3 x 9'2 (3.74m x 2.80m)

Bedroom 3: 8'3 x 8'2 (2.52m x 2.49m)

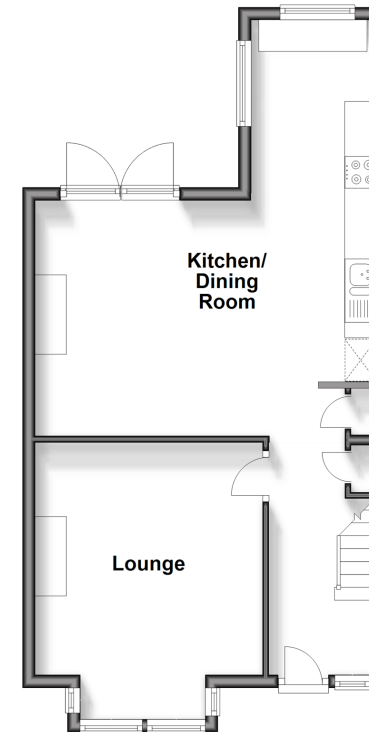
Bathroom

OUTSIDE

Front & Rear Garden

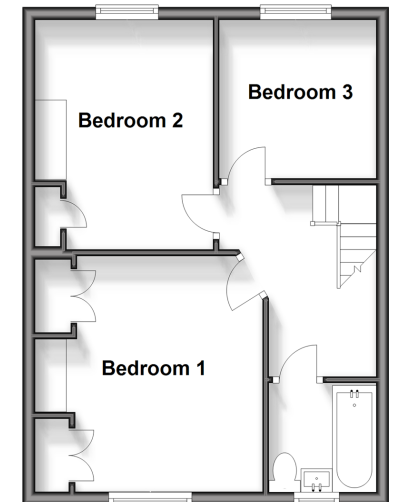
Ground Floor

Approx. 47.8 sq. metres (514.6 sq. feet)



First Floor

Approx. 40.5 sq. metres (436.2 sq. feet)



Call Fiveways - 01273 564444 ■ cubittandwest.co.uk

- Legal advice should be taken to verify fixtures/fittings, planning, alterations and/or lease details
- Appliances & services are untested, dimensions are approximate and floor plans are not to scale



30506004/20250125/AF/EM