



Guide Price
£550,000

Freehold

2x  1x  2x 

**Gordon Road, Brighton,
East Sussex, BN1**

cubitt&west
Helping you move forwards



Main features

- Lovely Victorian house with stripped floors and original fireplaces
- Friendly neighbourhood, close to Preston Park and Fiveways
- In the catchment area for excellent schools
- Charming rear garden
- A short walk to the train station

Accommodation

GROUND FLOOR

Entrance Hall

Lounge : 11'7 x 11'6 maximum (3.53m x 3.51m)

Dining Area : 11'7 x 9'4 (3.53m x 2.85m)

Kitchen : 15'0 x 9'0 (4.58m x 2.75m)

FIRST FLOOR

Bedroom 1: 15'2 x 11'6 (4.63m x 3.51m)

Bedroom 2 : 11'7 x 9'4 (3.53m x 2.85m)

Bathroom

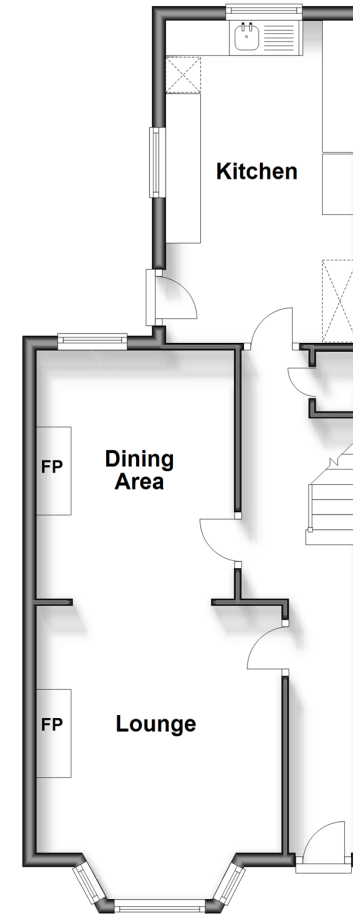
Separate Toilet

OUTSIDE

Front & Rear Garden

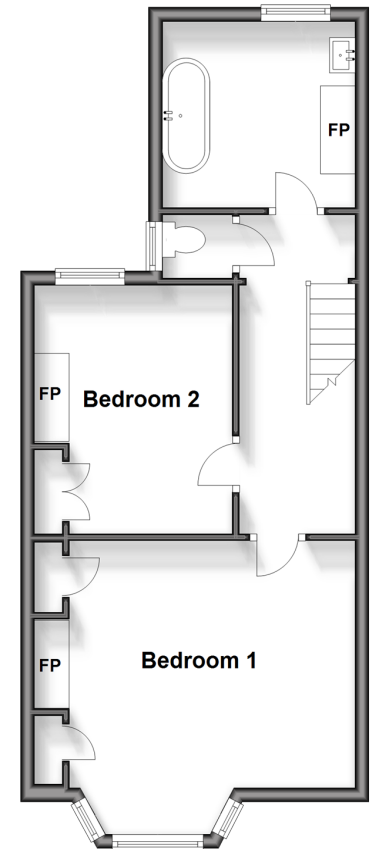
Ground Floor

Approx. 47.1 sq. metres (507.0 sq. feet)



First Floor

Approx. 44.6 sq. metres (480.1 sq. feet)



Call Fiveways - 01273 564444 ■ cubittandwest.co.uk

- Legal advice should be taken to verify fixtures/fittings, planning, alterations and/or lease details
- Appliances & services are untested, dimensions are approximate and floor plans are not to scale



30510209/20250503/AF/EM