



**Price**

**£280,000**

**Leasehold**

2x  1x  1x 

**Manhattan Court,  
Tongdean Lane,  
Brighton, East Sussex,  
BN1**

**cubitt & west**  
Helping you move forwards



## Main features

- Great size purpose built apartment
- Sunny balcony
- Modern throughout
- Allocated parking and visitors parking
- Close distance to Preston Park station

## Accommodation

### FIRST FLOOR

Entrance Hall

Lounge : 17'4 x 10'8 (5.29m x 3.25m)

Balcony

Kitchen : 7'6 x 7'4 (2.29m x 2.24m)

Bedroom 1: 17'2 x 9'5 (5.24m x 2.87m)

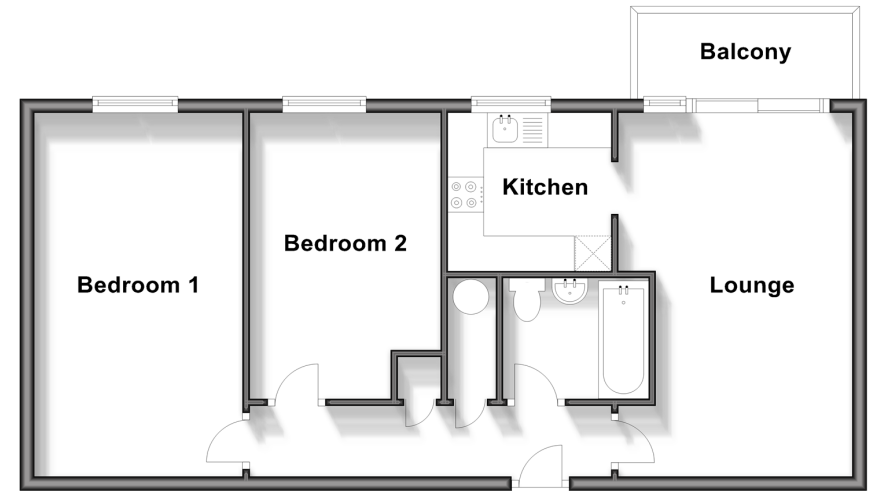
Bedroom 2 : 13'1 x 8'7 (3.99m x 2.62m)

Bathroom



### First Floor

Approx. 59.1 sq. metres (636.1 sq. feet)



Call Fiveways - 01273 564444 ■ [cubittandwest.co.uk](http://cubittandwest.co.uk)

- Legal advice should be taken to verify fixtures/fittings, planning, alterations and/or lease details
- Appliances & services are untested, dimensions are approximate and floor plans are not to scale



30509708/20240316/AF/JR