



Price
£750,000

Freehold

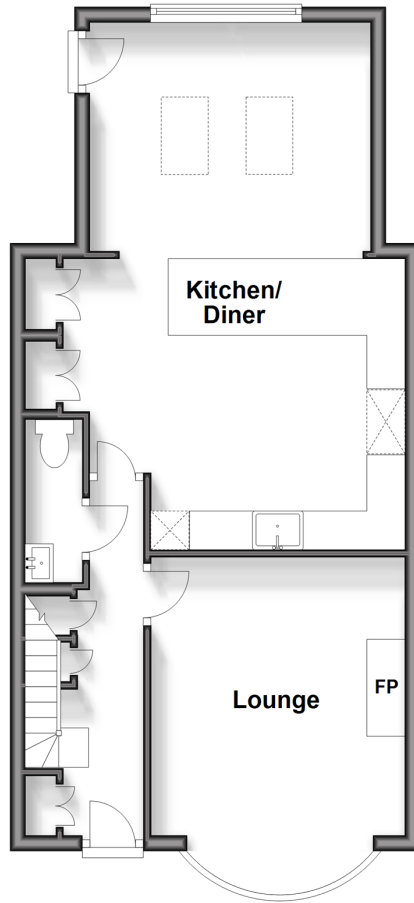
4x  2x  1x 

**Osborne Road, Brighton,
East Sussex, BN1**

cubitt & west
Helping you move forwards

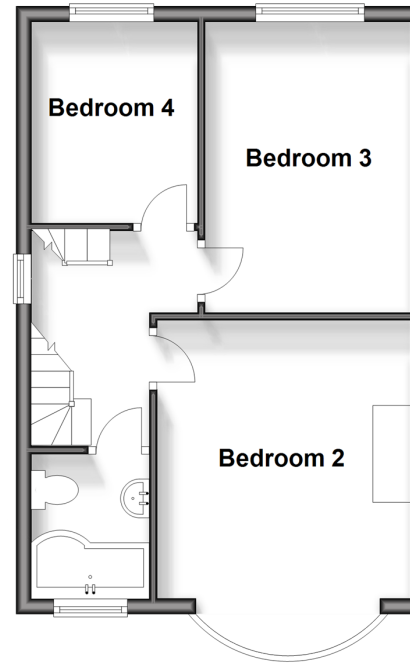
Ground Floor

Approx. 48.8 sq. metres (525.7 sq. feet)



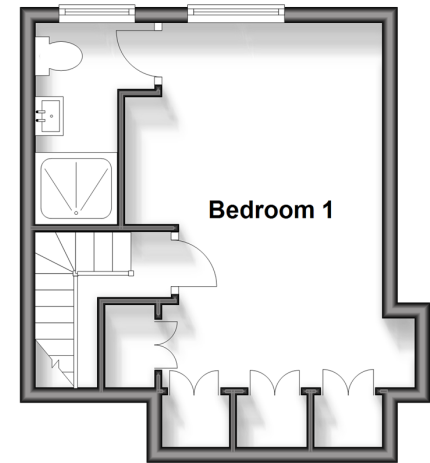
First Floor

Approx. 37.6 sq. metres (404.2 sq. feet)



Second Floor

Approx. 24.1 sq. metres (259.2 sq. feet)



Accommodation

GROUND FLOOR

Entrance Hall

Lounge : 11'9 x 10'11 (3.58m x 3.33m)

Kitchen/Diner : 28'5 x 22'2 (8.67m x 6.76m)

Cloakroom

FIRST FLOOR

Landing

Bedroom 2 : 11'9 x 10'1 (3.58m x 3.08m)

Bedroom 3 : 12'4 x 8'10 (3.76m x 2.69m)

Bedroom 4 : 8'6 x 7'2 (2.59m x 2.19m)

Bathroom

SECOND FLOOR

Bedroom 1 : 15'5 x 11'1 (4.70m x 3.38m)

En Suite Shower Room

OUTSIDE

Front & Rear Garden



Main features

- Stunning and extended semi-detached family home in friendly neighbourhood
- Large kitchen/dining space
- Sunny rear garden
- Walking distance to excellent schools and popular parks
- Check out the virtual tour



Nearest Schools

Primary Schools: Balfour Junior School 0.1 miles, St Bernadette's Catholic Primary 0.4 miles, Downs Junior School 0.5 miles
Secondary Schools: Dorothy Stringer High School 0.2 miles, Varndean School 0.2 miles



Transport Information

Train Stations: Preston Park 0.6 miles, London Road 0.6 miles, Brighton 1.6 miles



Address

Osborne Road, Brighton, East Sussex, BN1



Directions

For directions to this property please contact us.



cubitt&west
Helping you move forwards

Call Fiveways Branch 01273 564444 ■ cubittandwest.co.uk



■ Legal advice should be taken to verify fixtures/fittings, planning, alterations and/or lease details ■ Appliances & services are untested, dimensions are approximate and floor plans are not to scale



30509961/20231120/AB/EM