



**Price**  
**£425,000**

**Freehold**

3x  2x  2x 

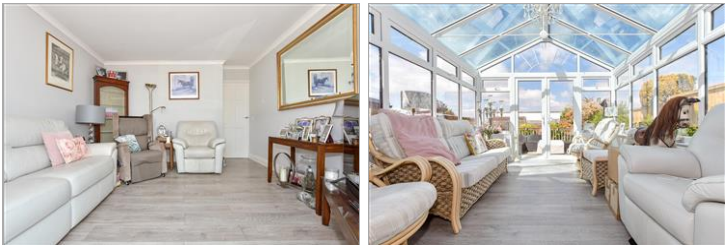
**Chanctonbury Chase,  
Seasalter, Whitstable,  
Kent, CT5**

**OVER 60?**

Secure this property  
for up to **59% less!**

*Wards*  
Helping you move forwards





## Main features

- Modern bathroom and wet room replaced in 2016/17
- Beautifully bright conservatory area
- Garage & driveway
- Separate utility area adjoined to the garage
- Quiet cul-de-sac location

## Accommodation

### GROUND FLOOR

Entrance Hallway

Bedroom 2: 11'10 x 8'7 (3.61m x 2.62m)

Bedroom 1: 15'0 (4.58m) narrowing to 9'8 (2.95m) x 12'3 (3.74m)

En-suite Wet Room

Bathroom

Bedroom 3: 13'1 x 8'7 (3.99m x 2.62m)

Kitchen: 11'10 x 9'2 (3.61m x 2.80m)

Lounge: 12'2 x 12'0 (3.71m x 3.66m)

Conservatory: 13'2 x 11'1 (4.02m x 3.38m)

### OUTSIDE

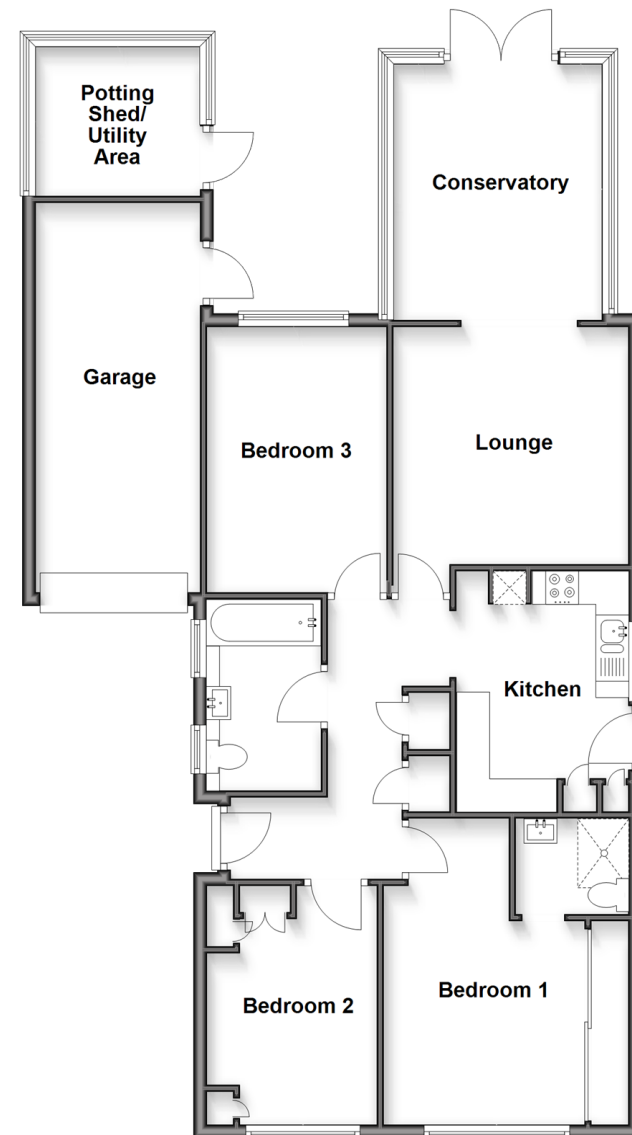
Driveway

Garage

Rear Garden

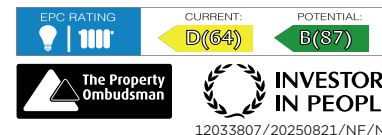
Potting Shed/Utility Area

**Ground Floor**  
Approx. 110.0 sq. metres (1184.1 sq. feet)



**Call Whitstable - 01227 772272 ■ [wardsofkent.co.uk](http://wardsofkent.co.uk)**

- Legal advice should be taken to verify fixtures/fittings, planning, alterations and/or lease details
- Appliances & services are untested, dimensions are approximate and floor plans are not to scale
- Through a Homewise Home For Life Plan people aged 60+ can secure this property for up to 50% less, by purchasing a Lifetime Lease.



12033807/20250821/NF/NF