



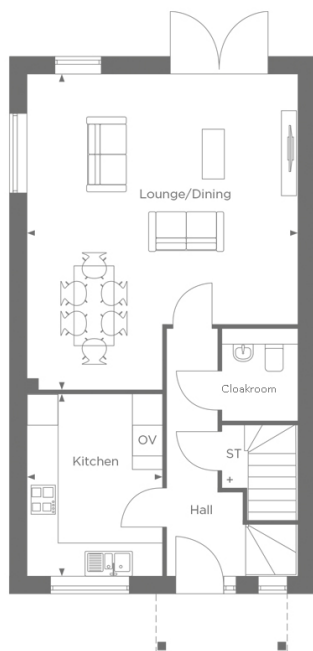
Price
£630,000

Freehold

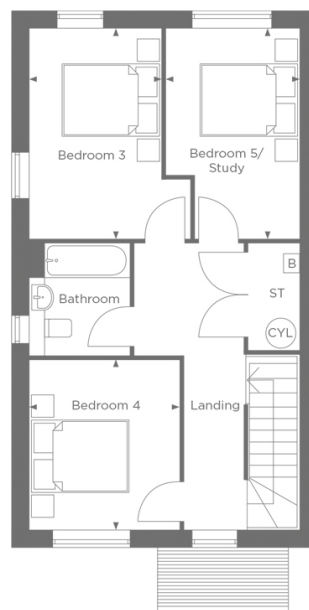
5x  2x  1x 

**Nassella Gardens,
Grasmere Gardens
(Phase 1), Chestfield,
Whitstable, Kent, CT5**

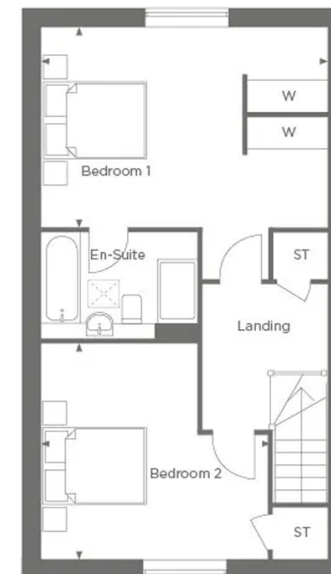
Wards
Helping you move forwards



THE LAUREL
Ground Floor
House Total Area - 160.7sq.m / 1730sq.ft



THE LAUREL
First Floor
House Total Area - 160.7sq.m / 1730sq.ft



THE LAUREL
Second Floor
House Total Area - 160.7sq.m / 1730sq.ft

Accommodation

GROUND FLOOR

Entrance Hallway

Cloakroom

Kitchen: 11'8 x 8'7 (3.56m x 2.62m)

Lounge/Dining: 20'6 x 17'5 (6.25m x 5.31m)

FIRST FLOOR

Landing

Bedroom 4: 11'0 x 9'8 (3.36m x 2.95m)

Bathroom

Bedroom 3: 13'7 x 8'5 (4.14m x 2.57m)

Bedroom 5/Study: 13'7 x 8'6 (4.14m x 2.59m)

SECOND FLOOR

Landing

Bedroom 1: 17'5 x 12'3 (5.31m x 3.74m)

Ensuite Bathroom

Bedroom 2: 13'9 x 13'1 (4.19m x 3.99m)



Main features

- A striking three storey detached house
- 4 bedrooms with an optional 5th bedroom/study
- French doors leading to patio and turfed rear garden
- Carport and driveway parking with EV charging point
- Bespoke fitted kitchen with built in appliances



Nearest Schools

Primary Schools: Whitstable and Seasalter Endowed C of E Junior School 0.2 miles, Whitstable Junior School 0.3 miles, St Mary's Catholic Primary 0.3 miles

Secondary Schools: The Whitstable School 0.6 miles,



Transport Information

Train Stations: Whitstable 0.2 miles, Chestfield & Swalecliffe 1.5 miles, Herne Bay 3.7 miles



Address

Nassella Gardens, Grasmere Gardens (Phase 1), Chestfield, Whitstable, Kent, CT5



Directions

For directions to this property please contact us.



Wards
Helping you move forwards

Call Whitstable Branch 01227 772272 ■ wardsofkent.co.uk



■ If buying to let, the energy rating will need to be improved to at least 'E' rating before you can let the property
■ Appliances & services are untested, dimensions are approximate and floor plans are not to scale

■ Legal advice should be taken to verify fixtures/fittings, planning, alterations and/or lease details

12033790/20250423/AR/NF