



**Price**

**£190,000**

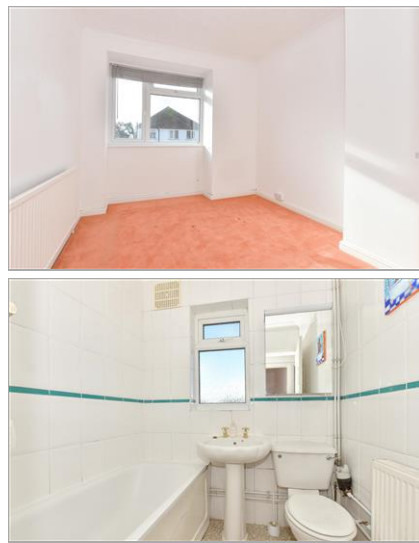
**Share of  
Freehold**

2x  1x  1x 

**St. John's Road,  
Whitstable, Kent, CT5**

*Wards*  
Helping you move forwards





## Main features

- No onward chain
- Close to shops and amenities
- Private entrance
- Share of freehold, no service charge or ground rent, long lease of over 990 years
- Ideal investment opportunity or first time buyer home

## Accommodation

### FIRST FLOOR

Entrance Hallway

Living Room : 20'2 x 14'6 (6.15m x 4.42m)

Bedroom 1 : 11'5 x 8'9 (3.48m x 2.67m)

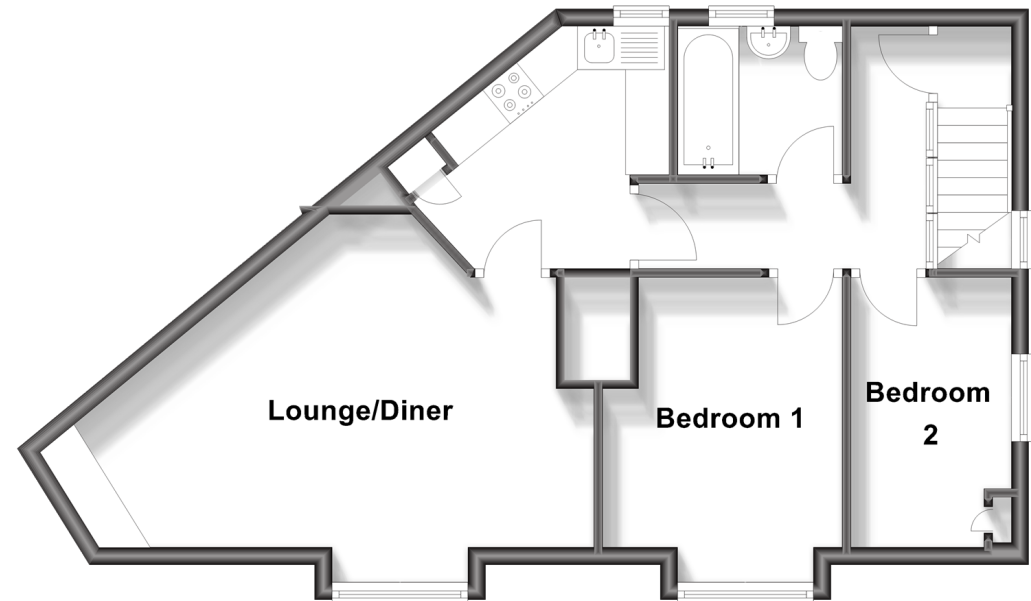
Bedroom 2 : 9'9 x 6'0 (2.97m x 1.83m)

Bathroom

Kitchen: 9'1 x 7'1 (2.77m x 2.16m)

### First Floor

Approx. 53.0 sq. metres (570.5 sq. feet)



Call Whitstable - 01227 772272 ■ [wardsofkent.co.uk](http://wardsofkent.co.uk)

■ Legal advice should be taken to verify fixtures/fittings, planning, alterations and/or lease details

■ Appliances & services are untested, dimensions are approximate and floor plans are not to scale