



Price
£425,000

Freehold

2x  1x  1x 

**Kimberley Grove,
Seasalter, Whitstable,
Kent, CT5**

OVER 60?

Secure this property
for up to **59% less!**

Wards
Helping you move forwards



Main features

- No onward chain
- Driveway parking and garage
- Peaceful cul-de-sac location
- Large well maintained rear garden with mature planting
- The perfect property for any new buyer to update and make their own

Accommodation

GROUND FLOOR

ENTRANCE HALLWAY

Bedroom 2: 12'9 x 7'9 (3.89m x 2.36m)

Bedroom 1: 14'6 x 13'0 (4.42m x 3.97m)

Bathroom

Living/Dining Room: 19'5 x 11'1 (5.92m x 3.38m)

Cloakroom

Kitchen: 11'5 x 11'2 (3.48m x 3.41m)

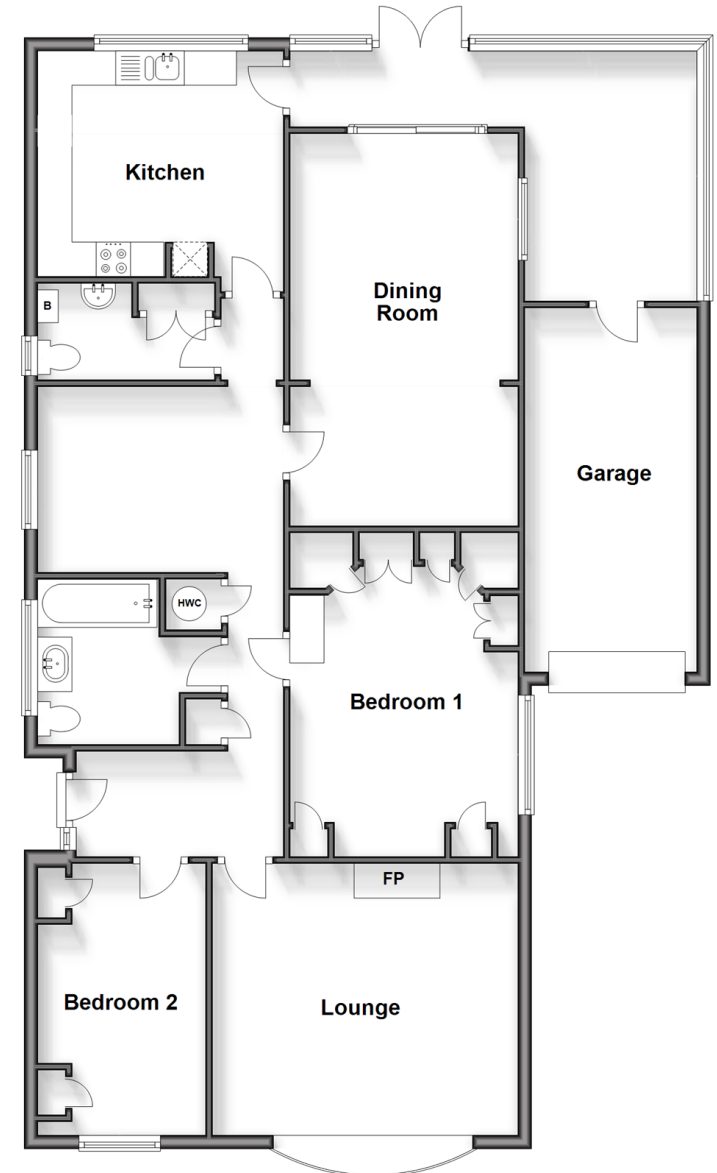
OUTSIDE

Driveway

Garage

Rear Garden

Ground Floor
Approx. 133.6 sq. metres (1438.0 sq. feet)



Call Whitstable - 01227 772272 ■ wardsofken.co.uk

- Legal advice should be taken to verify fixtures/fittings, planning, alterations and/or lease details
- Appliances & services are untested, dimensions are approximate and floor plans are not to scale
- Through a Homewise Home For Life Plan people aged 60+ can secure this property for up to 59% less, by purchasing a Lifetime Lease.



12032534/20250125/AR/FW