



OVER 60?

Secure this property
for up to **59% less!**

Price
£300,000

Freehold

2x  1x  1x 

**Wheatley Road,
Whitstable, Kent, CT5**

Wards
Helping you move forwards



Main features

- First floor family bathroom
- Kitchen/diner leading to the rear garden
- Potential to modernise
- Centrally located, a short walk from the beach, high street and train station
- Potential for a driveway (subject to planning consent)

Accommodation

GROUND FLOOR

Entrance Porch

Hallway

Lounge: 14'9 x 11'0 (4.50m x 3.36m)

Kitchen/Diner: 16'2 x 9'2 (4.93m x 2.80m)

FIRST FLOOR

Landing

Bathroom

Bedroom 1: 14'6 x 9'8 (4.42m x 2.95m)

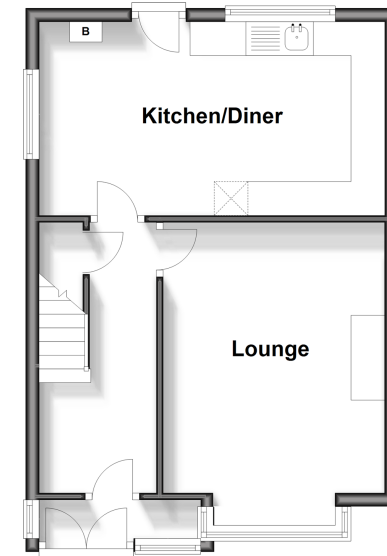
Bedroom 2 : 12'2 x 8'5 (3.71m x 2.57m)

OUTSIDE

Rear Garden

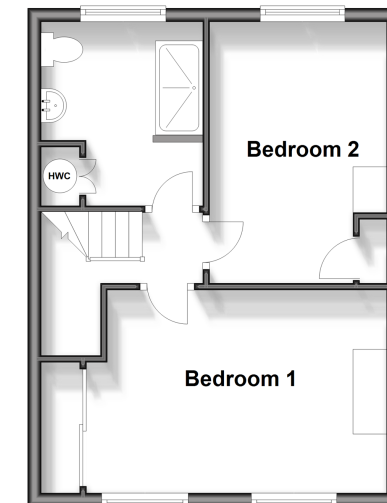
Ground Floor

Approx. 37.7 sq. metres (405.7 sq. feet)



First Floor

Approx. 35.7 sq. metres (383.8 sq. feet)



Call Whitstable - 01227 772272 ■ wardsof Kent.co.uk

- Legal advice should be taken to verify fixtures/fittings, planning, alterations and/or lease details
- Appliances & services are untested, dimensions are approximate and floor plans are not to scale
- Through a Homewise Home For Life Plan people aged 60+ can secure this property for up to 59% less, by purchasing a Lifetime Lease.



12033683/20250125/AR/NF