



Price

£600,000

Freehold

3x  1x  1x 

Portway, Whitstable,  
Kent, CT5

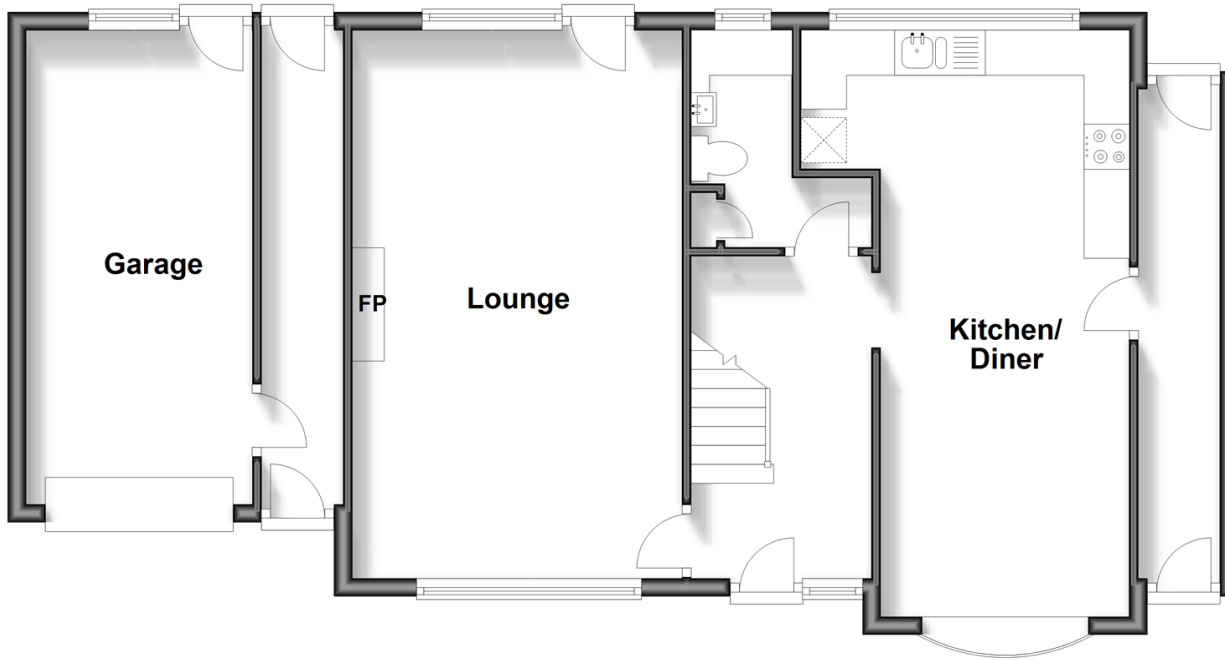
**OVER 60?**

Secure this property  
for up to **59% less!**

*Wards*  
Helping you move forwards

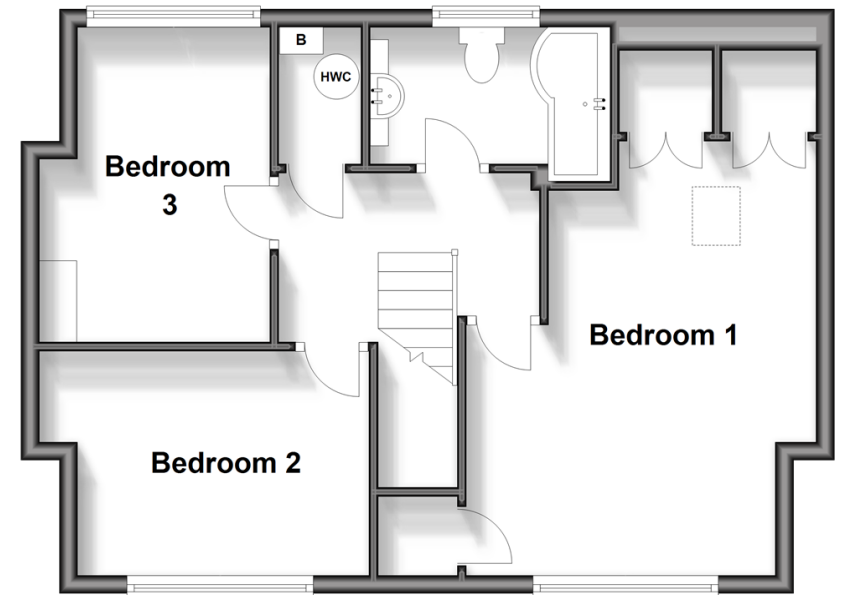
## Ground Floor

Approx. 77.7 sq. metres (836.3 sq. feet)



## First Floor

Approx. 50.1 sq. metres (539.4 sq. feet)



## Accommodation

### GROUND FLOOR

Entrance Hallway

Kitchen / Diner: 21'2 x 9'1 (6.46m x 2.77m)

Utility/WC: 7'10 x 3'7 (2.39m x 1.09m)

Lounge: 20'4 x 12'0 (6.20m x 3.66m)

Landing

Bedroom 1 : 15'2 x 12'8 (4.63m x 3.86m)

Bathroom

Bedroom 2: 11'5 x 8'5 (3.48m x 2.57m)

Bedroom 3 : 10'4 x 7'10 (3.15m x 2.39m)

### OUTSIDE

Garage

Driveway

Front Garden

Rear Garden

### FIRST FLOOR



## Main features

- Detached house in a quiet location
- Garage and driveway
- Easy access to town and beach
- Engineered oak flooring and log burner in the lounge
- Open-plan kitchen/diner makes a wonderful social setting

## Nearest Schools

Primary Schools: Whitstable Junior School 0.2 miles, Joy Lane Primary 0.2 miles, Whitstable and Seasalter Endowed C of E Junior School 0.3 miles.  
Secondary Schools: The Whitstable School 0.7 miles, Herne Bay High School 3.9 miles.

## Transport Information

Train Stations: Whitstable 0.6 miles, Chestfield & Swalecliffe 2.0 miles, Herne Bay 4.2 miles

## Address

Portway, Whitstable, Kent, CT5

## Directions

For directions to this property please contact us.



**Wards**  
Helping you move forwards

Call Whitstable Branch 01227 772272 ■ [wardsofkent.co.uk](http://wardsofkent.co.uk)



- Legal advice should be taken to verify fixtures/fittings, planning, alterations and/or lease details
- Appliances & services are untested, dimensions are approximate and floor plans are not to scale
- Through a Homewise Home For Life Plan people aged 60+ can secure this property for up to 59% less, by purchasing a Lifetime Lease.

EPC RATING

CURRENT: D(60) POTENTIAL: C(78)

16003132/20241125/AR/NF