



Price
£450,000

Freehold

3x  1x  2x 

**Clare Road, Whitstable,
Kent, CT5**

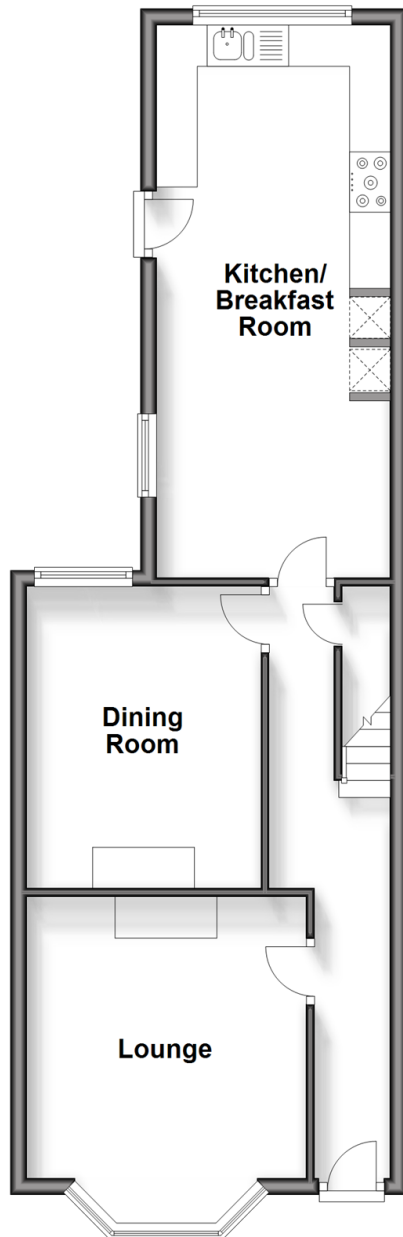
OVER 60?

Secure this property
for up to **59% less!**

Wards
Helping you move forwards

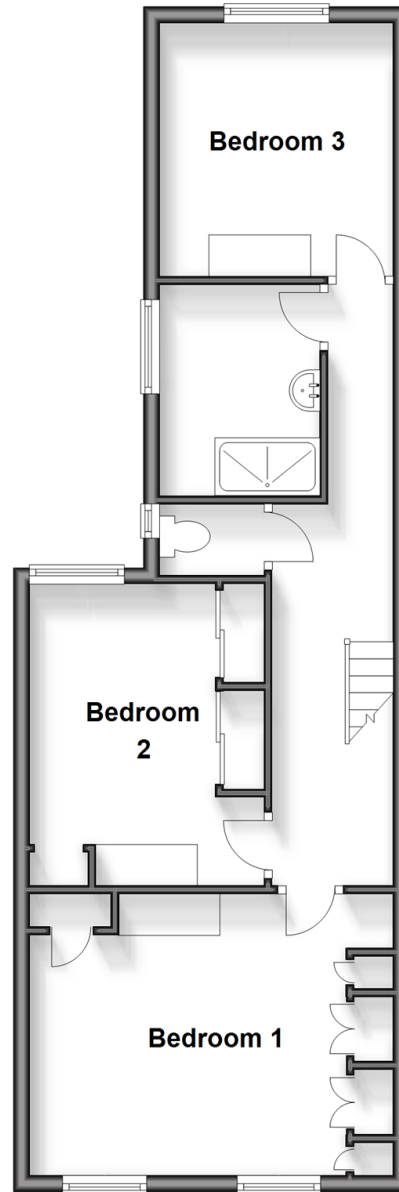
Ground Floor

Approx. 51.9 sq. metres (558.5 sq. feet)



First Floor

Approx. 51.6 sq. metres (554.9 sq. feet)



Accommodation

GROUND FLOOR

Entrance Hallway

Lounge: 11'4 x 11'3 (3.46m x 3.43m)

Dining Room : 11'4 x 9'5 (3.46m x 2.87m)

Kitchen/Breakfast Room : 21'10 x 9'5 (6.66m x 2.87m)

FIRST FLOOR

Landing

Bedroom 1 : 14'11 x 11'4 (4.55m x 3.46m)

Bedroom 2 : 11'6 x 9'5 (3.51m x 2.87m)

Separate Toilet

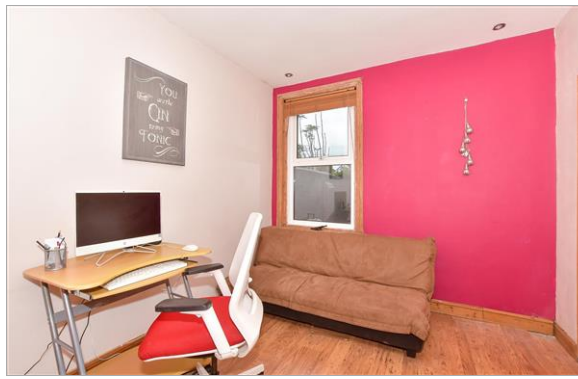
Shower Room

Bedroom 3 : 9'9 x 9'6 (2.97m x 2.90m)

OUTSIDE

Front Garden

Rear Garden



Main features

- Chain free
- Large kitchen/breakfast room and separate dining room
- A short walk from Whitstable train station
- 3 generously proportioned rooms
- Perfect location between Whitstable and Tankerton

Nearest Schools

Primary Schools: St Mary's Catholic Primary 0.1 miles, Whitstable and Seasalter Endowed C of E Junior School 0.4 miles, Whitstable Junior School 0.5 miles

Secondary Schools: The Whitstable School 0.6 miles,

Transport Information

Train Stations: Whitstable 0.2 miles, Chestfield & Swalecliffe 1.3 miles, Herne Bay 3.5 miles

Address

Clare Road, Whitstable, Kent, CT5

Directions

For directions to this property please contact us.



Wards
Helping you move forwards

Call Whitstable Branch 01227 772272 ■ wardsofkent.co.uk



- Legal advice should be taken to verify fixtures/fittings, planning, alterations and/or lease details
- Appliances & services are untested, dimensions are approximate and floor plans are not to scale
- Through a Homewise Home For Life Plan people aged 60+ can secure this property for up to 59% less, by purchasing a Lifetime Lease.



EPC RATING



12033283/20241016/AR/NF