



Price

£355,000

Freehold

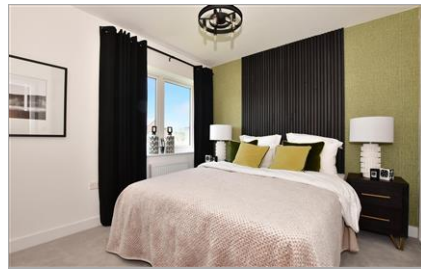
2x  2x  1x 

Plot 109, Nassella
Gardens, Grasmere
Gardens (Phase 1),
Chestfield, Whitstable,

OVER 60?

Secure this property
for up to **59% less!**

Wards
Helping you move forwards



Main features

- Beautiful bright living space opening onto the garden
- Separate kitchen with high spec finish and integrated appliances
- Driveway parking
- Fitted wardrobes and ensuite shower room to the main bedroom

Accommodation

GROUND FLOOR

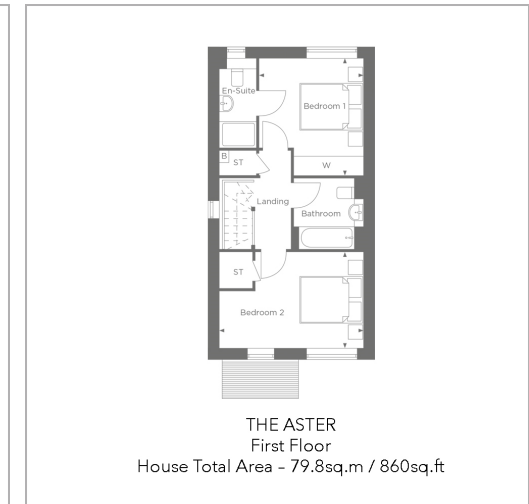
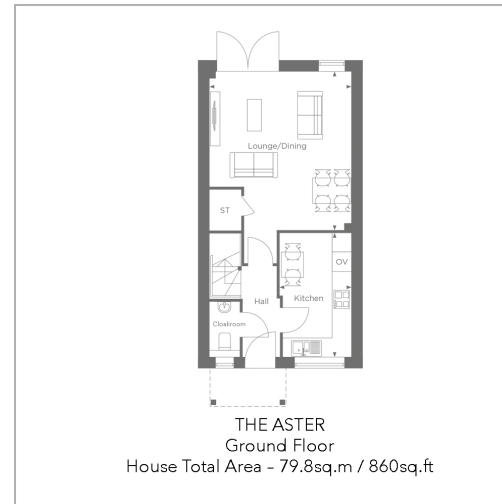
- Entrance Hallway
- Cloakroom
- Kitchen: 12'7 x 7'3 (3.84m x 2.21m)
- Lounge/Dining: 16'3 x 14'3 (4.96m x 4.35m)

FIRST FLOOR

- Landing
- Bedroom 1: 11'8 x 10'6 (3.56m x 3.20m)
- Ensuite Shower Room
- Bedroom 2 : 14'6 x 9'6 (4.42m x 2.90m)
- Bathroom

OUTSIDE

- Driveway
- Front Garden
- Rear Garden



Call Whitstable - 01227 772272 ■ wardsokent.co.uk

- If buying to let, the energy rating will need to be improved to at least 'E' rating before you can let the property
- Appliances & services are untested, dimensions are approximate and floor plans are not to scale

- Legal advice should be taken to verify fixtures/fittings, planning, alterations and/or lease details
- Through a Homewise Home For Life Plan people aged 60+ can secure this property for up to 59% less, by purchasing a Lifetime Lease.



12033627/20241003/AR/NF