



Price
£575,000

Freehold

4x  2x  2x 

**Borstal Hill, Whitstable,
Kent, CT5**

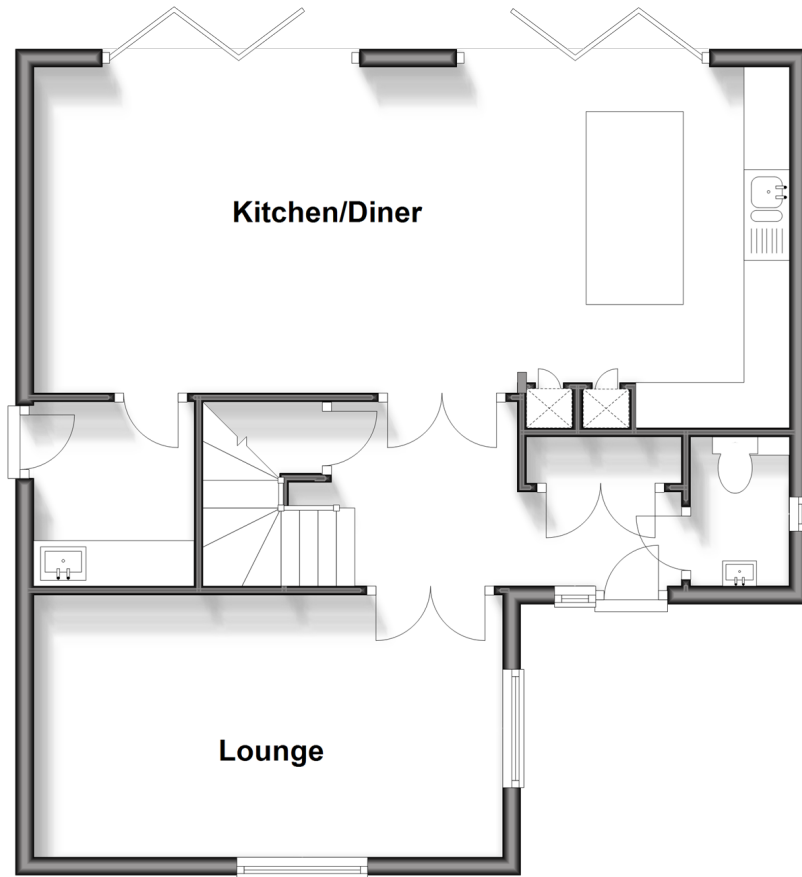
OVER 60?

Secure this property
for up to **59% less!**

Wards
Helping you move forwards

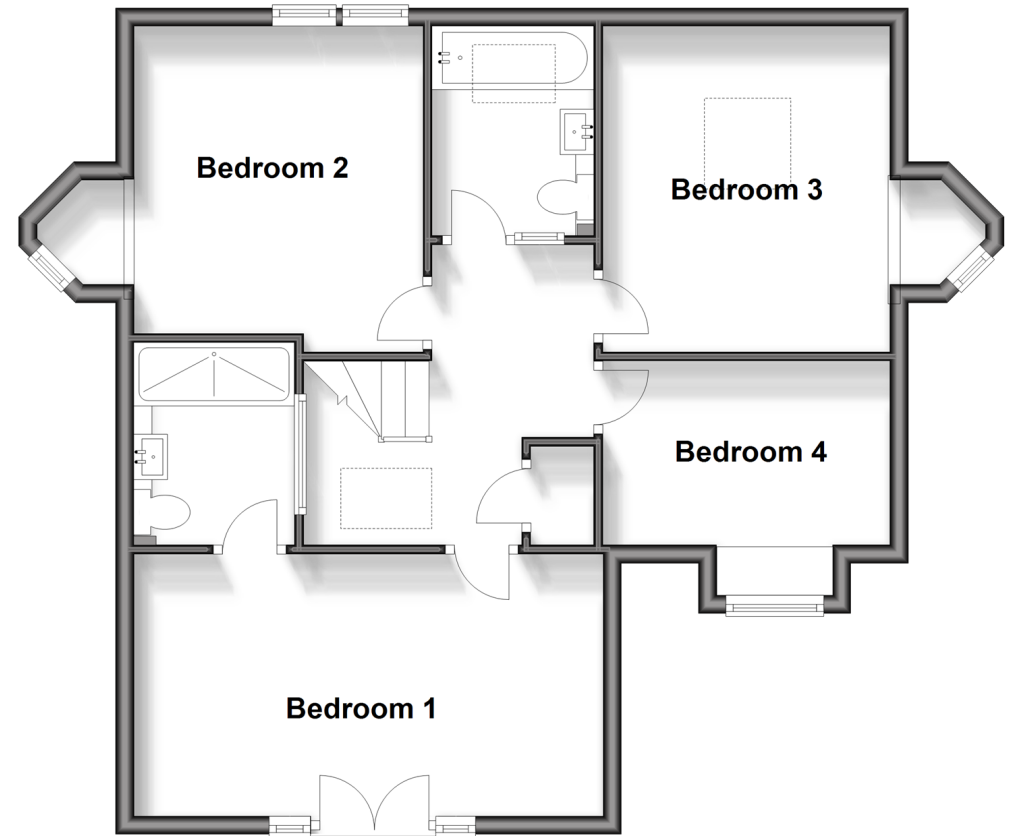
Ground Floor

Approx. 63.0 sq. metres (678.2 sq. feet)



First Floor

Approx. 65.7 sq. metres (706.7 sq. feet)



Accommodation

GROUND FLOOR

Entrance Hallway

Lounge: 16'9 x 9'5 (5.11m x 2.87m)

Cloakroom

Kitchen/Diner: 27'1 x 13'0 (8.26m x 3.97m)

Utility: 6'9 x 5'8 (2.06m x 1.73m)

FIRST FLOOR

Landing

Bedroom 1: 16'10 x 9'6 (5.13m x 2.90m)

En suite shower room

Bedroom 2 : 11'11 x 9'10 (3.63m x 3.00m)

Bathroom

Bedroom 3: 11'11 x 10'9 (3.63m x 3.28m)

Bedroom 4: 10'0 x 7'1 (3.05m x 2.16m)

OUTSIDE

Driveway

Rear Garden



Main features

- Beautiful house with parking and EV charger
- Built just over two years ago
- Ensuite to the main bedroom
- Spacious and bright modern home, perfect for families
- Open-plan kitchen/diner with bi-fold doors to the garden

Nearest Schools

Primary Schools: Joy Lane Primary 0.3 miles, Whitstable Junior School 0.6 miles, Whitstable and Seasalter Endowed C of E Junior School 0.7 miles

Secondary Schools: The Whitstable School 0.7 miles

Transport Information

Train Stations: Whitstable 0.9 miles, Chestfield & Swalecliffe 2.1 miles, Herne Bay 4.3 miles

Address

Borstal Hill, Whitstable, Kent, CT5

Directions

For directions to this property please contact us.



Wards
Helping you move forwards

Call Whitstable Branch 01227 772272 ■ wardsofkent.co.uk



- Legal advice should be taken to verify fixtures/fittings, planning, alterations and/or lease details
- Appliances & services are untested, dimensions are approximate and floor plans are not to scale
- Through a Homewise Home For Life Plan people aged 60+ can secure this property for up to 59% less, by purchasing a Lifetime Lease.

EPC RATING

CURRENT: B(91) POTENTIAL: A(98)

12033492/20240921/AR/NF