



**Price**  
**£200,000**

**Leasehold**

1x  1x  1x 

**Victoria Mews, Regent  
Street, Whitstable, Kent,  
CT5**

**OVER 60?**

Secure this property  
for up to **59% less!**

*Wards*  
Helping you move forwards





## Main features

- No onward chain
- Situated moments from Whitstable High Street
- Undercroft allocated parking
- Well-presented with neutral decor
- Lease of 125 years from 2013



## Accommodation

### FIRST FLOOR

Entrance Hallway

Bathroom

Bedroom : 10'0 x 8'10 (3.05m x 2.69m)

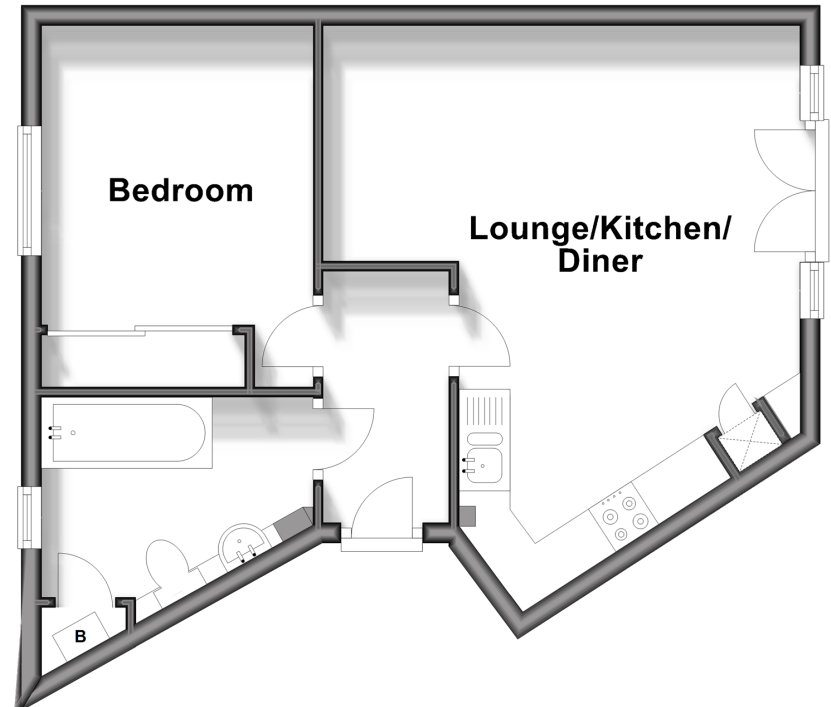
Lounge/Kitchen/Diner: 18'2 x 17'5 (5.54m x 5.31m)

### OUTSIDE

Allocated parking



**First Floor**  
Approx. 38.8 sq. metres (418.0 sq. feet)



**Call Whitstable - 01227 772272 ■ [wardsof Kent.co.uk](http://wardsof Kent.co.uk)**

- Legal advice should be taken to verify fixtures/fittings, planning, alterations and/or lease details
- Appliances & services are untested, dimensions are approximate and floor plans are not to scale
- Through a Homewise Home For Life Plan people aged 60+ can secure this property for up to 59% less, by purchasing a Lifetime Lease.



12033375/20240920/CJ/NF