

OVER 60?

Secure this property
for up to **59% less!**



Price

£250,000

Leasehold

2x  1x  1x 

Oxford Street, Whitstable, Kent, CT5

Wards

Helping you move forwards



Main features

- No service charge and a low ground rent charge
- Private rear garden
- Duplex maisonette with ample living space and storage
- Centrally located in Whitstable, a short walk from shops and amenities
- An ideal family or holiday home opportunity

Accommodation

GROUND FLOOR

Entrance

FIRST FLOOR

Hallway

Bedroom 1: 14'1 x 11'4 (4.30m x 3.46m)

Kitchen: 11'5 x 11'4 (3.48m x 3.46m)

Bedroom 2: 11'4 x 8'3 (3.46m x 2.52m)

SECOND FLOOR

Lounge: 23'1 x 14'1 (7.04m x 4.30m)

OUTSIDE

Rear Garden

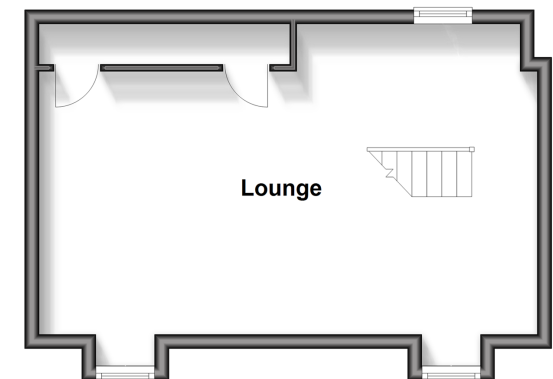
First Floor

Approx. 50.2 sq. metres (539.9 sq. feet)



Second Floor

Approx. 31.0 sq. metres (333.9 sq. feet)



Call Whitstable - 01227 772272 ■ wardsofkent.co.uk

- If buying to let, the energy rating will need to be improved to at least 'E' rating before you can let the property
- Legal advice should be taken to verify fixtures/fittings, planning, alterations and/or lease details
- Appliances & services are untested, dimensions are approximate and floor plans are not to scale
- Through a Homewise Home For Life Plan people aged 60+ can secure this property for up to 59% less, by purchasing a Lifetime Lease.



12033507/20240930/AR/NF