



**Price**  
**£275,000**

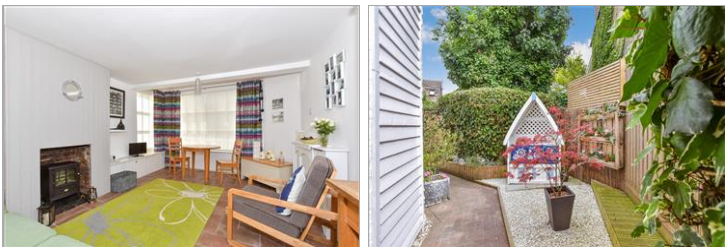
**Freehold**

1x  1x  1x 

**Canterbury Road,  
Whitstable, Kent, CT5**

**Wards**  
Helping you move forwards





## Main features

- Delightful period cottage
- Full of wonderful period features
- Ideally situated moments from Whitstable high street and the beach
- Attractive side garden to cottage
- No onward chain

## Accommodation

### GROUND FLOOR

Kitchen/Lounge/Diner: 30'7 x 11'8  
(9.33m x 3.56m)

### FIRST FLOOR

Bedroom 1 : 12'6 x 11'11 (3.81m x 3.63m)

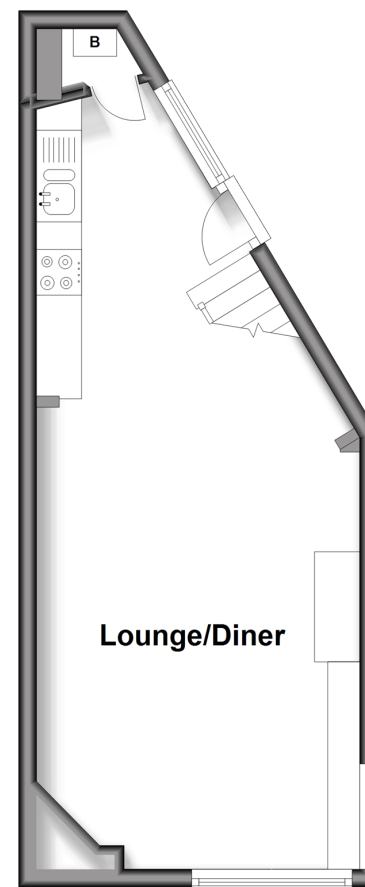
Bathroom

### OUTSIDE

Side Garden

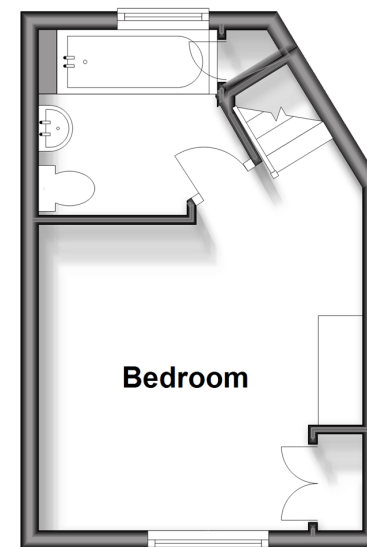
### Ground Floor

Approx. 26.8 sq. metres (288.5 sq. feet)



### First Floor

Approx. 18.6 sq. metres (200.6 sq. feet)



**Call Whitstable - 01227 772272 ■ [wardsofkent.co.uk](http://wardsofkent.co.uk)**

- Legal advice should be taken to verify fixtures/fittings, planning, alterations and/or lease details
- Appliances & services are untested, dimensions are approximate and floor plans are not to scale



12033562/20250307/NF/NF