



Price

£205,000

Leasehold

1x  1x  1x 

Chaucer House,
Wheatley Road,
Whitstable, Kent, CT5

Wards
Helping you move forwards



Main features

- Modern, open plan kitchen/lounge area with built-in appliances and underfloor heating
- Central Whitstable close to station, town, seafront and park
- Allocated parking space
- Lift access
- Chain-free

Accommodation

SECOND FLOOR

Hall

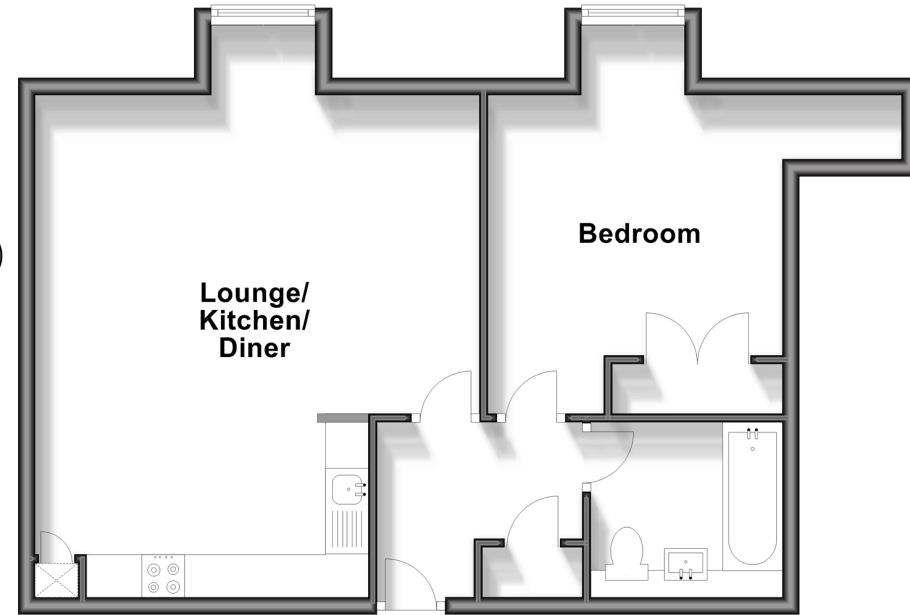
Lounge/Kitchen/Diner: 19'3 (5.87m) narrowing to 12'10 (3.91m) x 17'1 (5.21m)

Bedroom 1 : 12'2 x 11'3 (3.71m x 3.43m)

Bathroom

Second Floor

Approx. 54.5 sq. metres (586.1 sq. feet)



Call Whitstable - 01227 772272 ■ wardsofkent.co.uk

- Legal advice should be taken to verify fixtures/fittings, planning, alterations and/or lease details
- Appliances & services are untested, dimensions are approximate and floor plans are not to scale



12033516/20241018/AR/NF