

OVER 60?

Secure this property
for up to **59% less!**



Guide Price
£210,000
Leasehold

2x  2x  1x 

Olympia Way, Whitstable, Kent, CT5

Wards
Helping you move forwards



Main features

- En-suite and built in wardrobes to the primary bedroom
- Integrated appliances to the kitchen
- One allocated parking space
- High specification bathroom with a sleek underlit bath tub
- Light and airy open plan living space

Accommodation

SECOND FLOOR

Entrance Hall

Lounge/Kitchen/Diner: 19'9 x 10'10
(6.02m x 3.30m)

Bedroom 1 : 11'10 x 9'0 (3.61m x 2.75m)

En-Suite Shower Room

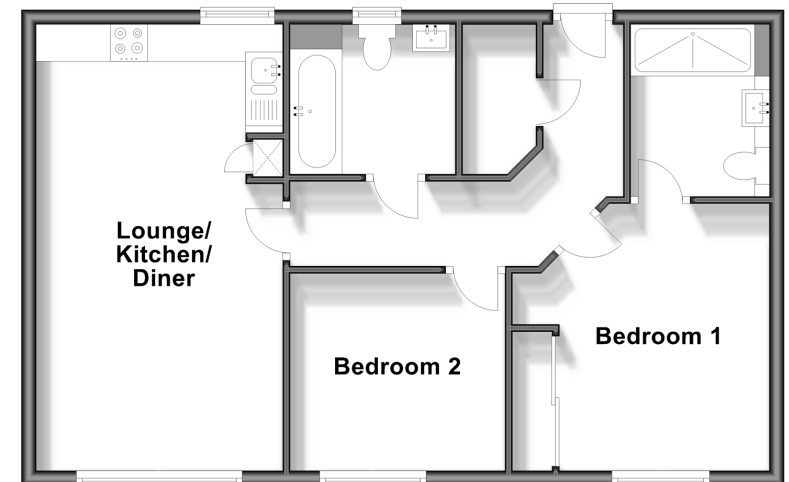
Bedroom 2 : 9'6 x 8'9 (2.90m x 2.67m)

Bathroom

OUTSIDE

Allocated Parking Space

Second Floor
Approx. 59.8 sq. metres (643.2 sq. feet)



Call Whitstable - 01227 772272 ■ wardsof Kent.co.uk

- Legal advice should be taken to verify fixtures/fittings, planning, alterations and/or lease details
- Appliances & services are untested, dimensions are approximate and floor plans are not to scale
- Through a Homewise Home For Life Plan people aged 60+ can secure this property for up to 59% less, by purchasing a Lifetime Lease.



12033466/20241105/FW/NF