



OVER 60?

Secure this property
for up to **59% less!**

Price

£650,000

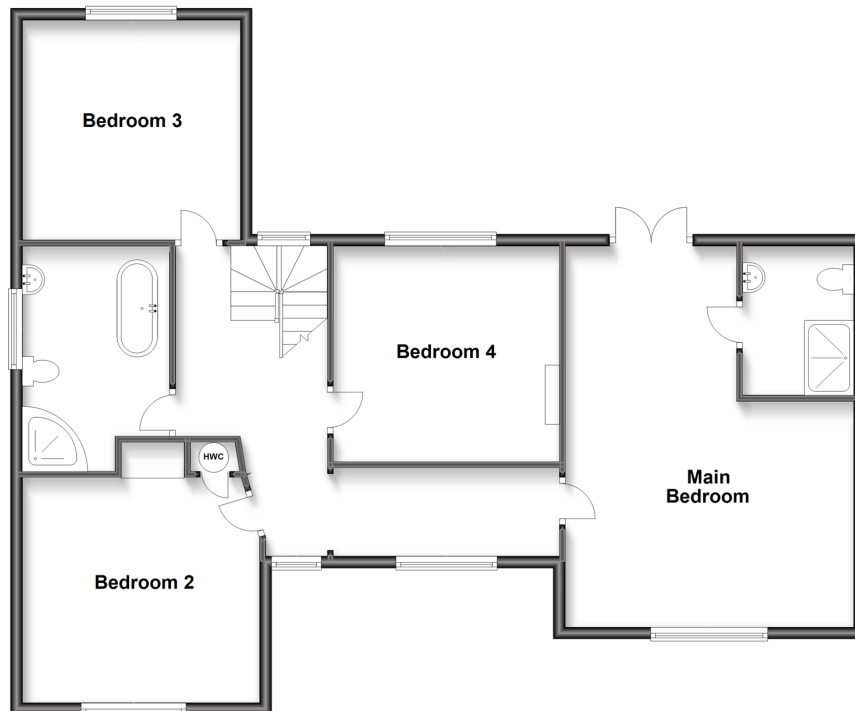
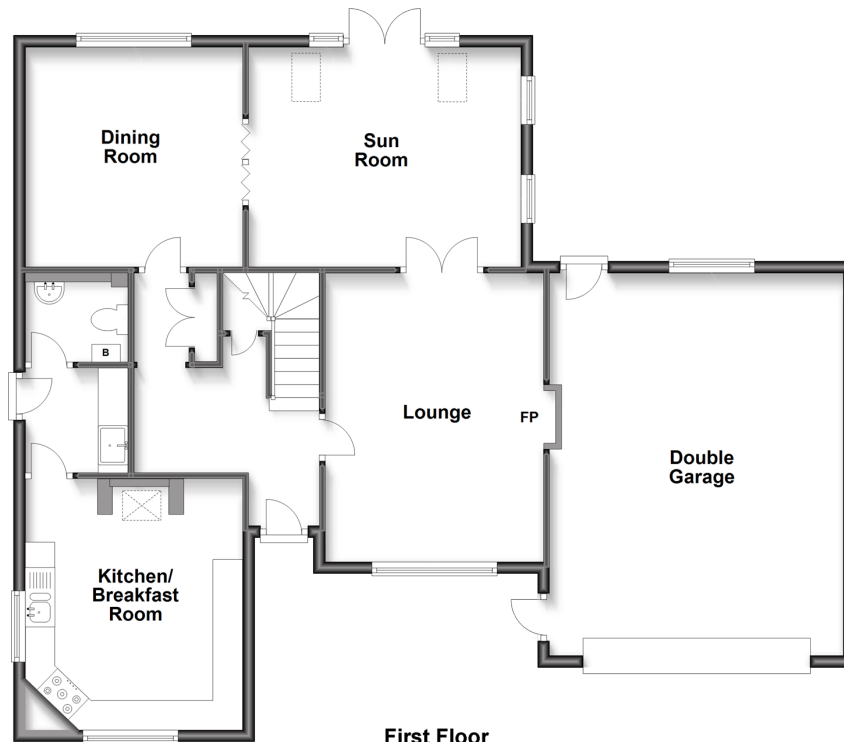
Freehold

4x  2x  3x 

**Clover Rise, Whitstable,
Kent, CT5**

Wards
Helping you move forwards

Split Level Ground Floor
Approx. 116.1 sq. metres (1249.4 sq. feet)



Accommodation

SPLIT LEVEL GROUND FLOOR

Hall

Lounge: 16'1 x 12'1 (4.91m x 3.69m)

Kitchen/Breakfast Room: 14'4 x 12'1 (4.37m x 3.69m)

Utility Room: 5'7 x 5'6 (1.70m x 1.68m)

Cloakroom: 5'7 x 4'1 (1.70m x 1.25m)

Dining Room: 12'3 x 12'1 (3.74m x 3.69m)

Sun Room: 15'8 x 12'1 (4.78m x 3.69m)

FIRST FLOOR

Landing

Main Bedroom: 20'9 x 16'1 (6.33m x 4.91m)

En-Suite Shower Room

Juliet Balcony

Bedroom 2: 13'1 x 12'6 (3.99m x 3.81m)

Bedroom 3: 12'4 x 12'1 (3.76m x 3.69m)

Bedroom 4: 12'5 x 12'1 (3.79m x 3.69m)

Bathroom: 12'8 x 8'1 (3.86m x 2.47m)

OUTSIDE

Front Garden

Driveway

Double Garage

Single Garage

Rear Garden



Main features

- Spacious double fronted detached house on a very wide plot
- Double and single garage plus driveway
- Wonderful extension with vaulted ceiling overlooking the rear garden
- Very spacious bedrooms including a Juliet balcony to the main bedroom
- Conveniently located for either access to local shops or Thanet Way for commuters



Nearest Schools

Primary Schools: Swalecliffe Community Primary 0.5 miles, St Mary's Catholic Primary 0.6 miles, Whitstable and Seasalter Endowed C of E Junior School 1.1 miles
Secondary Schools: The Whitstable School, Whitstable 0.6 miles, Herne Bay High School 2.6 miles



Transport Information

Train Stations: Whitstable 0.7 miles, Chestfield & Swalecliffe 0.7 miles, Herne Bay 2.9 miles



Address

Clover Rise, Whitstable, Kent, CT5



Directions

For directions to this property please contact us.



Call Whitstable Branch 01227 772272 ■ wardsofkent.co.uk



- Legal advice should be taken to verify fixtures/fittings, planning, alterations and/or lease details
- Appliances & services are untested, dimensions are approximate and floor plans are not to scale
- Through a Homewise Home For Life Plan people aged 60+ can secure this property for up to 59% less, by purchasing a Lifetime Lease.



12033162/20240403/AR/KW5